

# FRAMED PRIVACY PANELS

SMARTDESKS®

where design meets technology™

## FRONT PANELS | DESK DIVIDERS

Fabric, Frosted Acrylic or Whiteboard Core Choices

Aluminum Frames | Pewter Finish

One of our most customizable dividers, SMARTdesks Framed Partitions are fully framed, can be clamped on, surface-mounted or left freestanding on your desk.

Choose frosted acrylic, whiteboard or acoustic fabric cores. Fabric panels also provide sound absorption for a quieter workspace.

Our clamp options accommodate all tables and mounting methods, from permanent to easily removable.



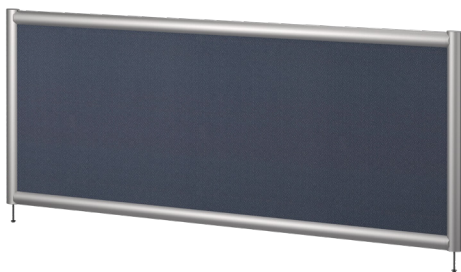
- All metal parts are anodized or powder coated for an aesthetic and durable finish

- Clamp options fit tables from 5/8" to 2" thick

- The frames are constructed using aluminum extrusion

- Whiteboard and Fabric cores are constructed using a solid, sound absorbing Acoustic Panel material to reduce noise levels
- Add an Accessory Rail to organize and get the most out of your work space
- SMARTdesks Partitions are Made in the USA.

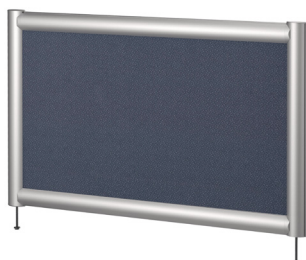
### FRONT PANELS



### BOLT THROUGH (standard mount)

- Permanent Mounting
- Requires drilling through work surface
- Locate anywhere on the desk
- Works on all thickness tops

### DESK DIVIDERS



- Rectangular full frame
- Panel core material is fabric, frosted acrylic, or whiteboard
- Frame is pewter finish
- Bolt-through mount is standard
- Clamp mount or top plate mount can be ordered separately
- Width: 30", 36", 42", 48", 54", 60", 63", 66", 72"
- Height: 18", 24"



# FRAMED PRIVACY PANELS



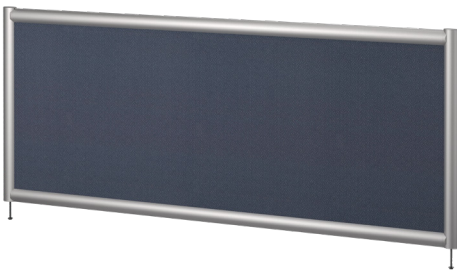
where design meets technology™

## FRONT PANELS

Fabric, Frosted Acrylic or Whiteboard Core Choices

Aluminum Frames | Pewter Finish

- Rectangular Frame, Pewter Finish
- Bolt-Through Mount is standard
- Clamp Mount or Top Plate Mount can be ordered separately
- Width: 30", 36", 42", 48", 54", 60", 63", 66", 72"
- Height: 18", 24"



### Fabric Acoustic Isolation Core

PPTTF-20-3018-F	.....30" x 18"
PPTTF-20-3024-F	.....30" x 24"
PPTTF-20-3618-F	.....36" x 18"
PPTTF-20-3624-F	.....36" x 24"
PPTTF-20-4218-F	.....42" x 18"
PPTTF-20-4224-F	.....42" x 24"
PPTTF-20-4818-F	.....48" x 18"
PPTTF-20-4824-F	.....48" x 24"
PPTTF-20-5418-F	.....54" x 18"
PPTTF-20-5424-F	.....54" x 24"
PPTTF-20-6018-F	.....60" x 18"
PPTTF-20-6024-F	.....60" x 24"
PPTTF-20-6318-F	.....63" x 18"
PPTTF-20-6324-F	.....63" x 24"
PPTTF-20-6618-F	.....66" x 18"
PPTTF-20-6624-F	.....66" x 24"
PPTTF-20-7218-F	.....72" x 18"
PPTTF-20-7224-F	.....72" x 24"

### Frosted Acrylic Core

PPTTF-20-3018-FRO	.....30" x 18"
PPTTF-20-3024-FRO	.....30" x 24"
PPTTF-20-3618-FRO	.....36" x 18"
PPTTF-20-3624-FRO	.....36" x 24"
PPTTF-20-4218-FRO	.....42" x 18"
PPTTF-20-4224-FRO	.....42" x 24"
PPTTF-20-4818-FRO	.....48" x 18"
PPTTF-20-4824-FRO	.....48" x 24"
PPTTF-20-5418-FRO	.....54" x 18"
PPTTF-20-5424-FRO	.....54" x 24"
PPTTF-20-6018-FRO	.....60" x 18"
PPTTF-20-6024-FRO	.....60" x 24"
PPTTF-20-6318-FRO	.....63" x 18"
PPTTF-20-6324-FRO	.....63" x 24"
PPTTF-20-6618-FRO	.....66" x 18"
PPTTF-20-6624-FRO	.....66" x 24"
PPTTF-20-7218-FRO	.....72" x 18"
PPTTF-20-7224-FRO	.....72" x 24"

### Whiteboard Core

PPTTF-20-3018-WB	.....30" x 18"
PPTTF-20-3024-WB	.....30" x 24"
PPTTF-20-3618-WB	.....36" x 18"
PPTTF-20-3624-WB	.....36" x 24"
PPTTF-20-4218-WB	.....42" x 18"
PPTTF-20-4224-WB	.....42" x 24"
PPTTF-20-4818-WB	.....48" x 18"
PPTTF-20-4824-WB	.....48" x 24"
PPTTF-20-5418-WB	.....54" x 18"
PPTTF-20-5424-WB	.....54" x 24"
PPTTF-20-6018-WB	.....60" x 18"
PPTTF-20-6024-WB	.....60" x 24"
PPTTF-20-6318-WB	.....63" x 18"
PPTTF-20-6324-WB	.....63" x 24"
PPTTF-20-6618-WB	.....66" x 18"
PPTTF-20-6624-WB	.....66" x 24"
PPTTF-20-7218-WB	.....72" x 18"
PPTTF-20-7224-WB	.....72" x 24"

# FRAMED PRIVACY PANELS



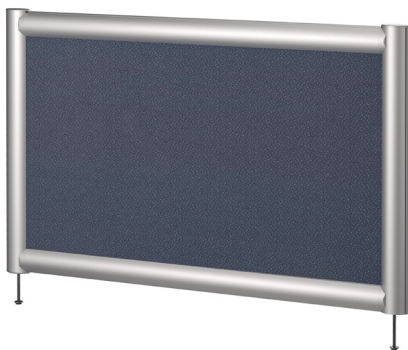
where design meets technology™

## SIDE PANELS

Fabric, Frosted Acrylic or Whiteboard Core Choices

Aluminum Frames | Pewter Finish

- Rectangular Frame, Pewter Finish
- Bolt-Through Mount is standard
- Clamp Mount or Top Plate Mount can be ordered separately
- Width: 18", 24", 26", 30", 36"
- Height: 18", 24"



### Fabric Acoustic Isolation Core

- PPTTW-20-1818-F.....18" x 18"
- PPTTW-20-1824-F .....18" x 24"
- PPTTW-20-2418-F .....24" x 18"
- PPTTW-20-2424-F .....24" x 24"
- PPTTW-20-2618-F .....26" x 18"
- PPTTW-20-2624-F .....26" x 24"
- PPTTW-20-3018-F .....30" x 18"
- PPTTW-20-3024-F .....30" x 24"
- PPTTW-20-3618-F .....36" x 18"
- PPTTW-20-3624-F .....36" x 24"

### Frosted Acrylic Core

- PPTTW-20-1818-FRO.....18" x 18"
- PPTTW-20-1824-FRO .....18" x 24"
- PPTTW-20-2418-FRO .....24" x 18"
- PPTTW-20-2424-FRO .....24" x 24"
- PPTTW-20-2618-FRO .....26" x 18"
- PPTTW-20-2624-FRO .....26" x 24"
- PPTTW-20-3018-FRO ....30" x 18"
- PPTTW-20-3024-FRO ....30" x 24"
- PPTTW-20-3618-FRO ....36" x 18"
- PPTTW-20-3624-FRO ....36" x 24"

### Whiteboard Core

- PPTTW-20-1818-WB .....18" x 18"
- PPTTW-20-1824-WB .....18" x 24"
- PPTTW-20-2418-WB .....24" x 18"
- PPTTW-20-2424-WB .....24" x 24"
- PPTTW-20-2618-WB .....26" x 18"
- PPTTW-20-2624-WB .....26" x 24"
- PPTTW-20-3018-WB .....30" x 18"
- PPTTW-20-3024-WB .....30" x 24"
- PPTTW-20-3618-WB .....36" x 18"
- PPTTW-20-3624-WB .....36" x 24"

# FRAMED PRIVACY PANELS

## MOUNTING OPTIONS

Our clamp options accommodate all tables and mounting methods, from permanent bolt-through and top plate mounting to easily removable clamps.

**BOLT THROUGH** is the standard, permanent mounting system included as basic.

**TOP PLATE** mounting is also permanent, but has the advantage of drilling pilots from the top, which is more intuitive for the installer, and it can also be used as a joining plate between two tables.

**EDGE CLAMP** and **MIDDLE CLAMP** mounting is for temporary or permanent mounting and does not require screwing into the work surface.



where design meets technology™

### BOLT THROUGH (standard mount)

- Permanent Mounting
- Requires drilling through work surface
- Locate anywhere on the desk
- Works on all thickness tops



### TOP PLATES

PP-TP-2 .....SET OF 2

PP-TP-3 .....SET OF 3

- Use for freestanding or permanent mounting
- Locate anywhere on the desk; requires drilling into work surface
- Rotate Top Plates for single- or double-sided plates
- Top Plate positions are adjustable
- Can be used to span two tables
- Kit includes 2 or 3 Top Plates depending on the size of the desk divider: 2 used for dividers up to 54"; 3 used for dividers up to 60" and wider
- Works on all thickness tops



### MIDDLE CLAMPS

PP-CM..... Individual

Only one clamp required to secure a desk divider.



### EDGE CLAMPS

PP-CE-2 .....SET OF 2

2 used for dividers up to 54"

PP-CE-3 .....SET OF 3

3 used for dividers up to 60" and wider

- Fast and easy installation and relocation
- Mount perpendicular to edge of work surface
- Note: Consider square edge treatment only; bull-nose and angled edge profiles do not work.

- Clamp fits 5/8" to 2" thick tops
- Temporary or permanent mounting
- No screwing or drilling into worksurface required
- Edge Clamp Kits include 2 or 3 clamps depending on the size of the desk divider

# FRAMED PRIVACY PANELS

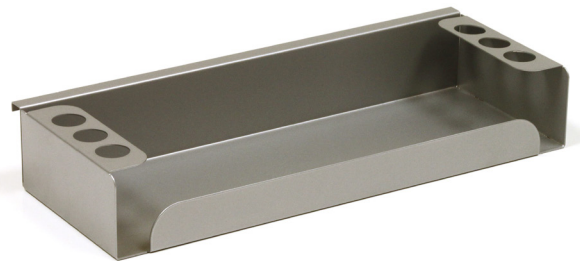
## ACCESSORIES

SMARTDESKS®

where design meets technology™



- PPA-S-TAR20 S Series Accessory Rail - 20"
- PPA-S-TAR26 S Series Accessory Rail - 26"
- PPA-S-TAR32 S Series Accessory Rail - 32"
- PPA-S-TAR44 S Series Accessory Rail - 44"



PPA-S-WBTR S Series Marker Tray



PPA-S-PC S Series Pen Cup



PPA-S-AT S Series Accessory Tray

# FRAMED PRIVACY PANELS

## FABRICS & FINISHES



where design meets technology™

### FABRICS - 100 SERIES



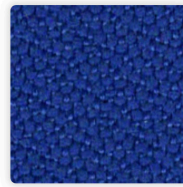
**Gaia**  
F101



**Mikan**  
F103



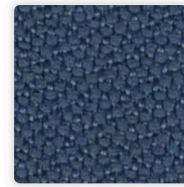
**Poppy**  
F104



**Euro**  
F102



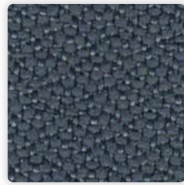
**Sapphire**  
F114



**Sodalite**  
F108



**Arundel**  
F112



**Iron**  
F121



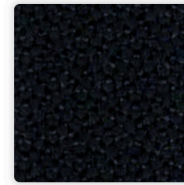
**Stately**  
F113



**Steel**  
F120



**Basalt**  
F122

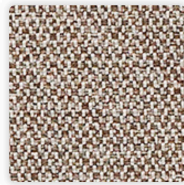


**Jet**  
F123

### FABRICS - 200 SERIES



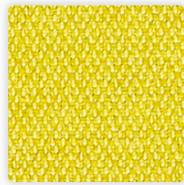
**Barley**  
F210



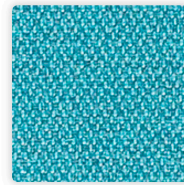
**Sable**  
F211



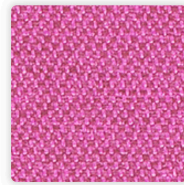
**Java**  
F212



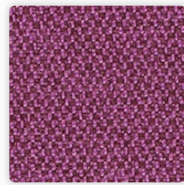
**Lemongrass**  
F213



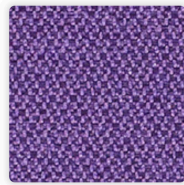
**Rinse**  
F214



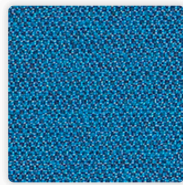
**Radiant**  
F215



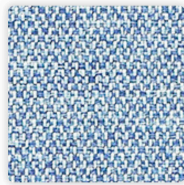
**Tyrian**  
F216



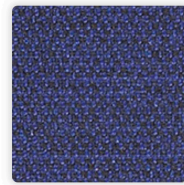
**Hyacinth**  
F217



**Capri**  
F218



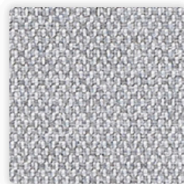
**Aster**  
F219



**Beyond**  
F220



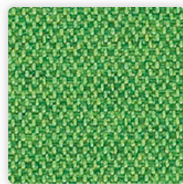
**Stucco**  
F221



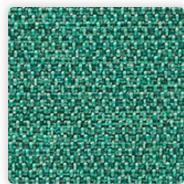
**Aluminum**  
F222



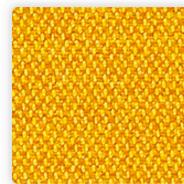
**Dove**  
F223



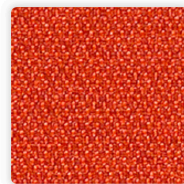
**Links**  
F224



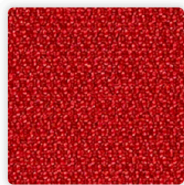
**Atoll**  
F225



**Maize**  
F226



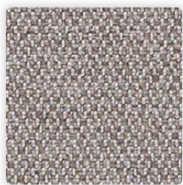
**Papaya**  
F227



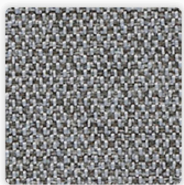
**Macintosh**  
F228



**Berry**  
F229



**Gull**  
F230



**Pewter**  
F231

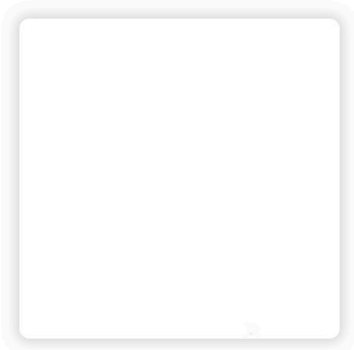
# FRAMED PRIVACY PANELS

## FABRICS & FINISHES

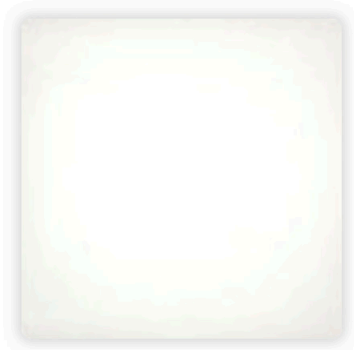


where design meets technology™

### GENERAL CORE MATERIALS



**Whiteboard**  
WB



**Frosted Acrylic**  
FRO

### FRAME COLOR



**Pewter**  
20

