

SMARTscreens™ MARKER BOARDS



where design meets technology™

Mobile Dry Erase | Magnetic Whiteboards

Options for feet, casters and accessory rail

Aluminum Frames | Pewter Finish

Mobile Whiteboards and Partitions are engineered to be durable, light weight and easy to move. Our Whiteboard surfaces are non-ghosting and designed for high usage. Our Mobile Whiteboards can be used in conference rooms, school class rooms, training rooms, meeting rooms, private offices, and at workstations as a portable privacy partition or a rolling cubical door.

- The frame is constructed using our proprietary aluminum extrusion
- Each unit includes our stylish metal mobile feet with 3" locking dual casters
- Dry Erase surface is non-ghosting and compatible with any dry erase, wet erase, permanent marker, grease pen, etc.
- Nesting design allows for units to be nested together for space-saving storage
- Whiteboard and fabric cores are constructed using a sound absorbing material to reduce noise levels.



SPECIFICATIONS

Core options for bottom panel:

- Fabric
- Folkstone Grey MDG
- Accessory rail is 23-1/2" from the floor
- Only the top panel changes in height, the bottom panel always stays the same height

Sizes:

- Width: 49" | 61" | 73"
- Height: 54" | 62" | 72"

Base Options:

- Feet and casters, ordered separately, may be used together or in combination.

Accessories:

- Accessory Rails
- Flip Chart Clips, Tray, Pencil Cup, Marker Tray
- Universal Hinge Kits: sets of 2 or 3

SMARTdesks® Partitions are Made in the USA.

SMARTscreens™ MARKER BOARDS



where design meets technology™

Mobile Dry Erase | Magnetic Whiteboards

Core options for top panel:

- Whiteboard
- Magnetic whiteboard (fewer sizes available)
- Accessory rail is 23.5" from the floor
- Only the top panel changes in height, the bottom panel always stays the same height

Base Options:

- Feet and casters
- Specify by choosing configuration from listings below

Core options for bottom panel:

- Fabric 100 Series and Fabric 200 Series

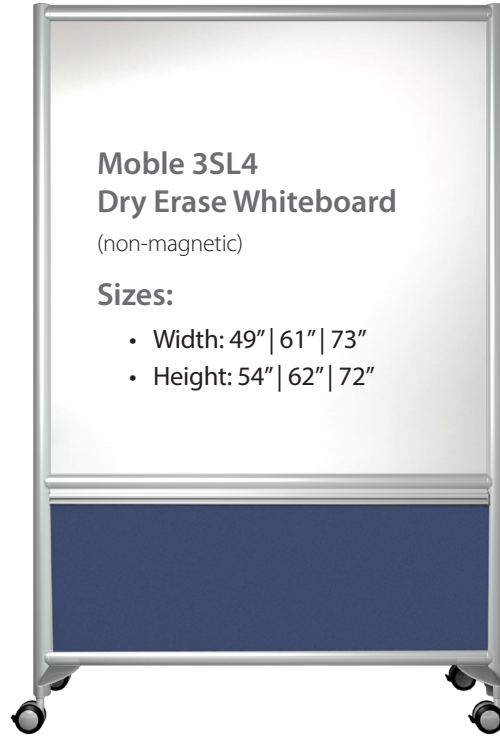


**Mobile 3SLM4
Magnetic Whiteboard**

Sizes:

- Width: 37" | 49"
- Height: 64" | 74"

Shown: 49" x 74"



**Mobile 3SL4
Dry Erase Whiteboard**

(non-magnetic)

Sizes:

- Width: 49" | 61" | 73"
- Height: 54" | 62" | 72"



**Magnetic Whiteboard
Fabric bottom**

PP3SLM4-20-3764-FMWB	37" x 64"
PP3SLM4-20-3774-FMWB	37" x 74"
PP3SLM4-20-4974-FMWB	49" x 74"



**Dry Erase Whiteboard
Fabric bottom**

PP3SL4-20-4954-F-WB	49" x 54"
PP3SL4-20-4962-F-WB	49" x 62"
PP3SL4-20-4972-F-WB	49" x 72"
PP3SL4-20-6154-F-WB	61" x 54"
PP3SL4-20-6162-F-WB	61" x 62"
PP3SL4-20-6172-F-WB	61" x 72"
PP3SL4-20-7354-F-WB	73" x 54"
PP3SL4-20-7362-F-WB	73" x 62"
PP3SL4-20-7372-F-WB	73" x 72"

SMARTscreens™ MARKER BOARDS



where design meets technology™

Freestanding Dry Erase Whiteboards

Core option for bottom panel:

- Fabric 100 Series and Fabric 200 Series
- Accessory rail is 23.5" from the floor
- Only the top panel changes in height, the bottom panel always stays the same height



Freestanding 3SLF Dry Erase Whiteboard

(non-magnetic)

Sizes:

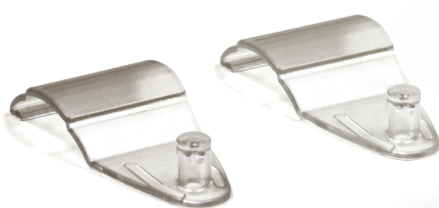
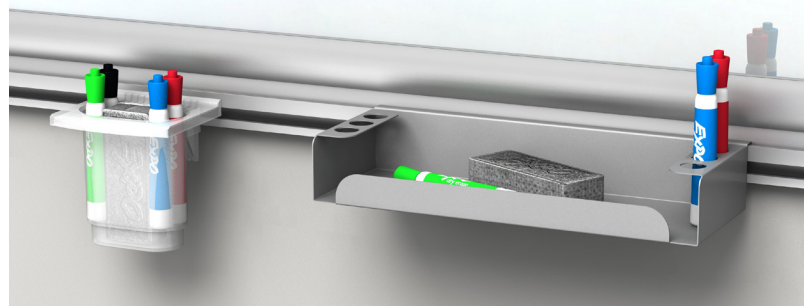
- Width: 49" | 61" | 73"
- Height: 54" | 62" | 72"



Dry Erase Whiteboard Fabric bottom

PP3SLF-20-4954-F-WB	49" x 54"
PP3SLF-20-4962-F-WB	49" x 62"
PP3SLF-20-4972-F-WB	49" x 72"
PP3SLF-20-6154-F-WB	61" x 54"
PP3SLF-20-6162-F-WB	61" x 62"
PP3SLF-20-6172-F-WB	61" x 72"
PP3SLF-20-7354-F-WB	73" x 54"
PP3SLF-20-7362-F-WB	73" x 62"
PP3SLF-20-7372-F-WB	73" x 72"

ACCESSORIES



PPA-FCC
Flip Chart Clips



PPA-S-PC
S Series Pen Cup



PPA-S-WBTR
S Series Marker Tray

SMARTscreens™ MARKER BOARDS

FABRICS & FINISHES



where design meets technology™

FABRICS - 100 SERIES



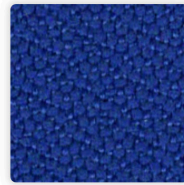
Gaia
F101



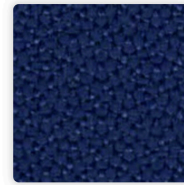
Mikan
F103



Poppy
F104



Euro
F102



Sapphire
F114



Sodalite
F108



Arundel
F112



Iron
F121



Stately
F113



Steel
F120



Basalt
F122

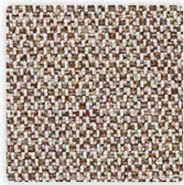


Jet
F123

FABRICS - 200 SERIES



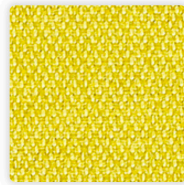
Barley
F210



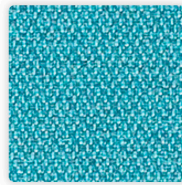
Sable
F211



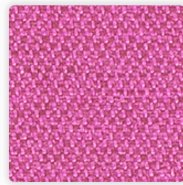
Java
F212



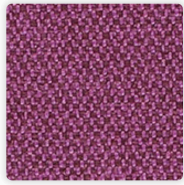
Lemongrass
F213



Rinse
F214



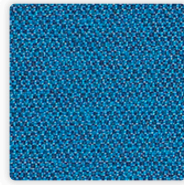
Radiant
F215



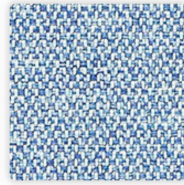
Tyrian
F216



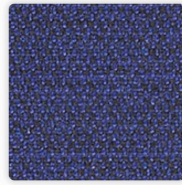
Hyacinth
F217



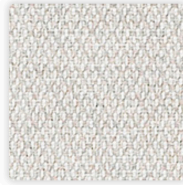
Capri
F218



Aster
F219



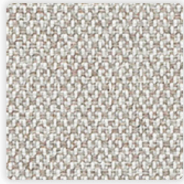
Beyond
F220



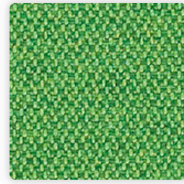
Stucco
F221



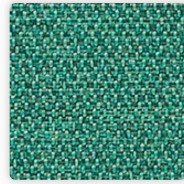
Aluminum
F222



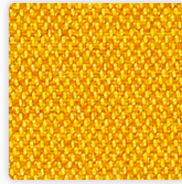
Dove
F223



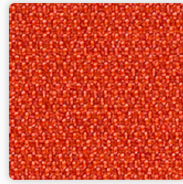
Links
F224



Atoll
F225



Maize
F226



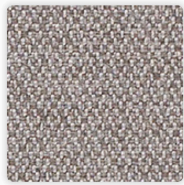
Papaya
F227



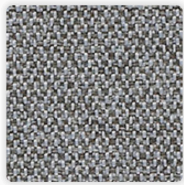
Macintosh
F228



Berry
F229



Gull
F230



Pewter
F231

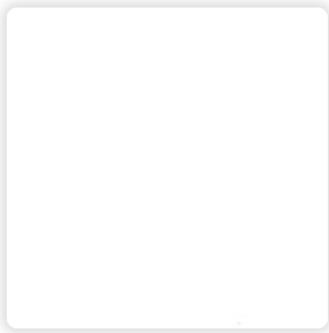
SMARTscreens™ MARKER BOARDS

FABRICS & FINISHES

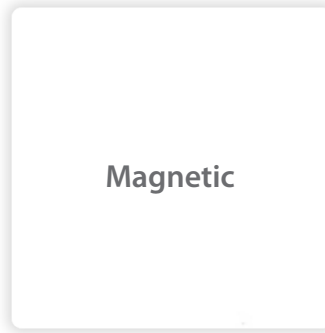


where design meets technology™

GENERAL CORE MATERIALS

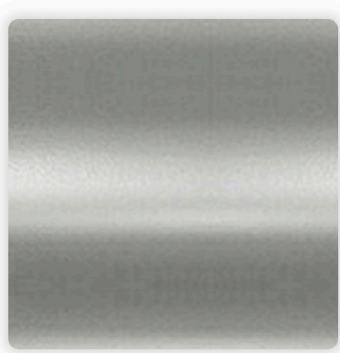


Whiteboard
WB



Whiteboard
WB

FRAME COLOR



Pewter
20



where design meets technology™