

# Assembly Directions



Before assembling table, install flipIT. or  
flipIT Laptop Safe.

Use flipIT Generation II installation  
manual, available online.

[www.smartdesks.com](http://www.smartdesks.com)



# Parts List



PI Table Top



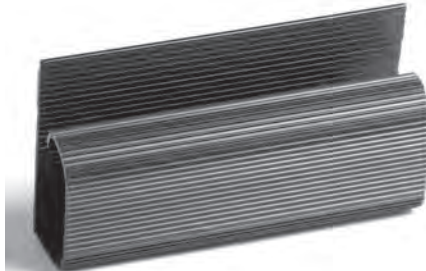
C Style Legs (2)



Modesty Panel



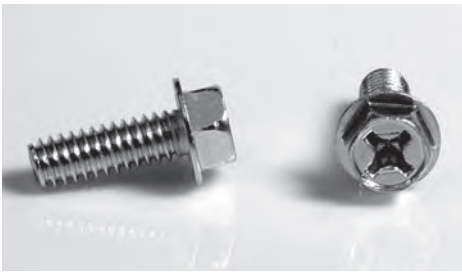
Surge Protector



Wire Manager (4)



Keys (2)



Bolts for attaching Legs (16)  
and CPU holder (4)



Euro Screws for attaching  
Modesty Panel (4)



Wood Screws for attaching  
Surge Protector (4)



Black Wood Screws for  
installing flipIT Frame (4)



CPU Holder

Screws and bolts have been supplied in bags marked for their purpose. These photos are to help you identify these parts if they are removed from the bag and the notes get misplaced. These photos are not to size.

## STEP 1

Use flipIT Generation II installation manual, available online:  
[www.smartdesks.com/pdf/fik-fih-install-11-05man.pdf](http://www.smartdesks.com/pdf/fik-fih-install-11-05man.pdf)

**Install flipIT** using the flipIT Generation II Installation Manual. Do not install the LCD monitor and do not connect the pneumatic cylinder until you finish assembling the table.

**Then place the top face down** on a padded work surface, such as a carpeted floor.

This photo does not show the flipIT installed. The user side is at the bottom of the photo.



## STEP 2

**Place legs on metal fittings for bolts.** Open side of C should face the user edge.

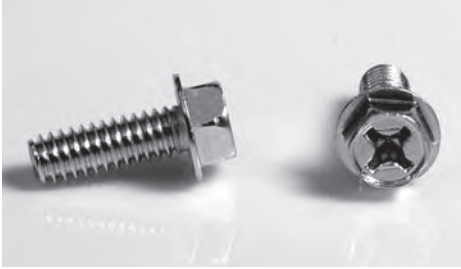
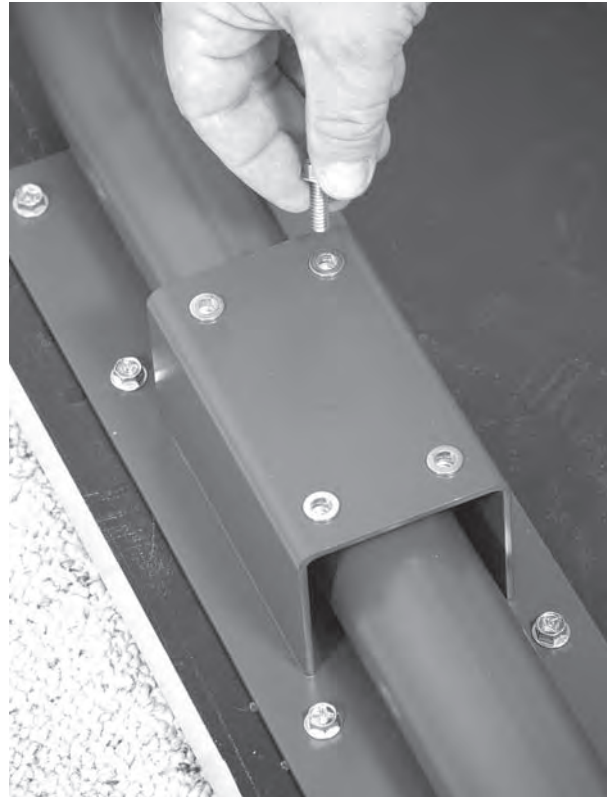


Install 8 bolts per leg using Phillips #2 driver or nut driver.



## STEP 3

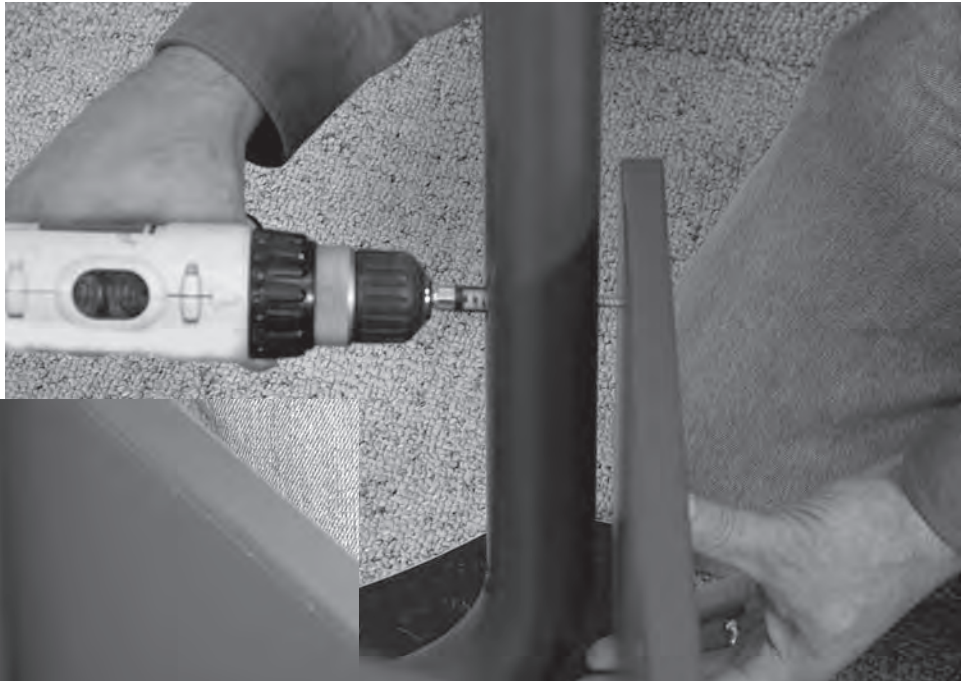
**Install CPU Holder.** The holder should face away from the leg area. Choose the set of threaded fittings on the leg that is on the convex end of the table.



The CPU holder is positioned on the leg-mounted bracket, then secured with 4 bolts of the same kind used for installing the legs.

## STEP 4

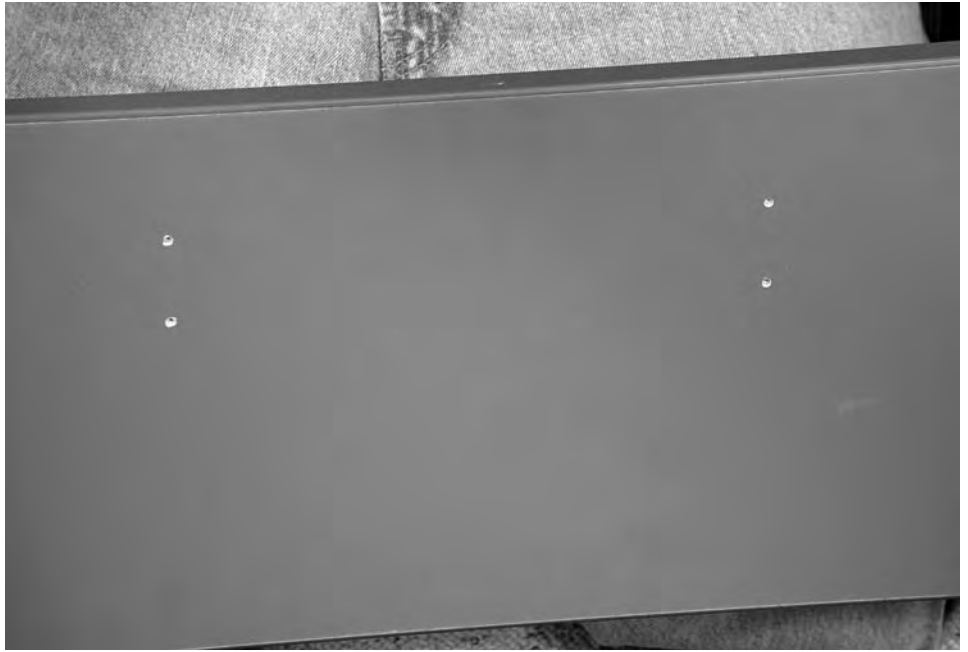
**Install Modesty Panel.** Use 4 Euro Screws and #2 Phillips driver. The large hole on the open side of the leg permits the driver shaft to pass through. Start the screw in the predrilled pilot holes, then tighten.



## STEP 4

### Install Surge Protector on Modesty Panel

Four pilot holes are predrilled for the provided surge protector.



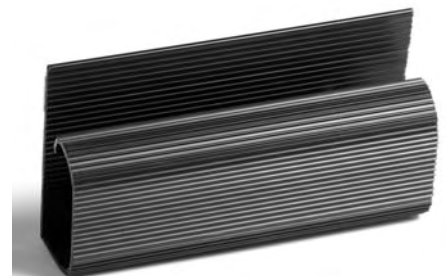
Install with 4 plated wood screws using #2 Phillips driver.



## STEP 5

### Install Wire Manager Channels

Remove paper from adhesive strip and place wire management channels to route cables as needed. The adhesive is strong and bonds on contact. Choose your locations carefully.





**[www.smartdesks.com](http://www.smartdesks.com)**

**800 770 7042**