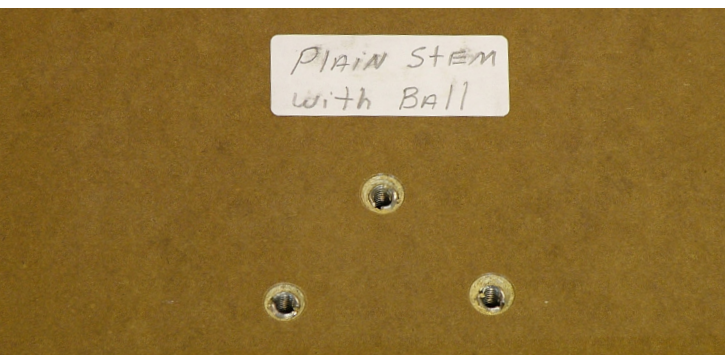
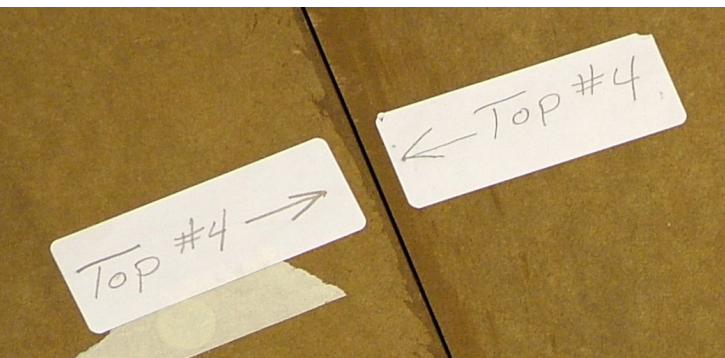


Assembly Instructions

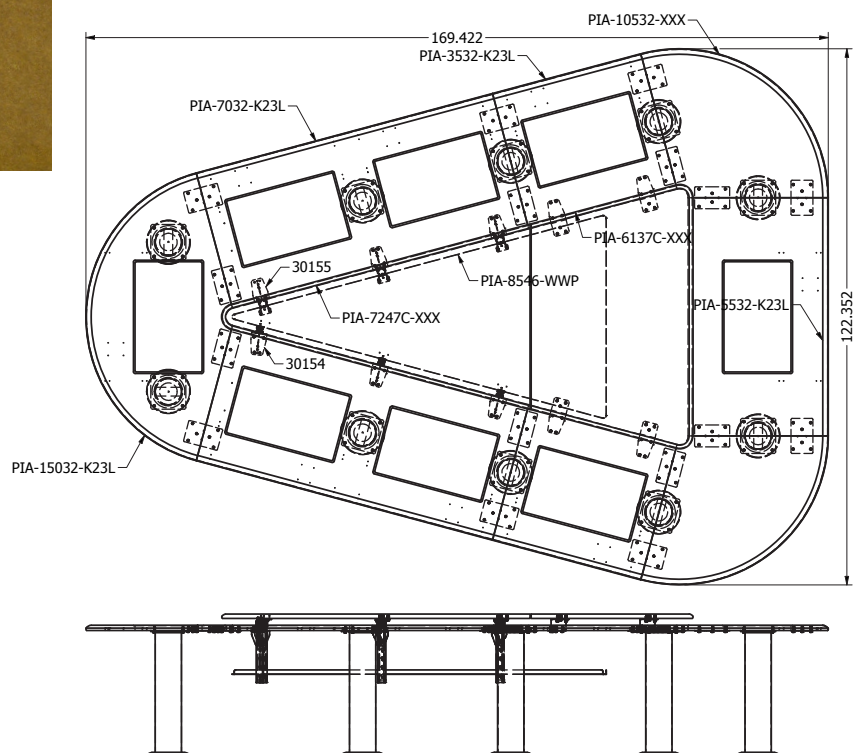
Refer to the parts list and diagram of the assembled top to arrange the top sections in the place they will occupy when completed. Take care to pad the assembly area to protect the tops from damage. Keep hard metal objects away from this area. A stray wood screw, or a paper clip can ruin everything.

Make paper labels to indicate where the tops match up and where the bracket locations are.

Separate instructions are included for installing the flipIT® units. These will be installed after the table is assembled.



PARTS LIST			
ITEM	QTY	PART NUMBER	DESCRIPTION
1	2	PIA-10532-XXX	TOP PANEL
2	16	FB5X8	SUPPORT PLATE
3	3	30155	
4	3	30154	
5	10	10006-1	
6	10	10006-2	
7	10	PIA-10-FR	COLUMN LEG FOOT RING
8	1	PIA-8546-WWP	WIREWAY PAN
9	1	PIA-7247C-XXX	CENTER LID PANEL
10	1	PIA-6137C-XXX	CENTER LID PANEL
11	1	PIA-15032-K23L	TOP PANEL
12	2	PIA-7032-K23L	TOP PANEL
13	2	PIA-3532-K23L	TOP PANEL
14	1	PIA-5532-K23L	TOP PANEL
15	4	Z BRACKET	Z BRACKET
16	190	92979A122	BOLT, 1/4"-20 Thread Size, 1"
17	1	GGS35-75-K MOUNTING SHAFT	
18	1	GGS35-75-K CYLINDER	
19	2	BS101-02	
20	2	X31750-A	
21	3	90087A197	8-32 Thread, 3/4" Long
22	3	90190A296	Number 12 Size, 1" Long



Assemble the end top to the first adjoining top section.

Use hex head 1/4-20 bolts to install the legs into the threaded inserts.

Use the same bolts to install the joining plates. Do not over-tighten these joining plates. When the entire table is assembled and in its final position, the plates will be secured as the top sections are leveled in.



Turn the 2 connected top sections over onto their feet.



Use two people to do this.

Take care not to set the edge molding on anything that might damage the finish.



The three legs should support the top so additional top sections can be added.



Install the leg to the next top section and the next pair of joining plates.



Use two people to do this.

Do not over-tighten the joining plates. Keep the assembly loose enough to adjust during the final leveling process.



Continue working this way in mirror symmetry until the table is on its feet.



Level in the table top

(The table in these photos is actually a Piano18)

Use two people to do this.



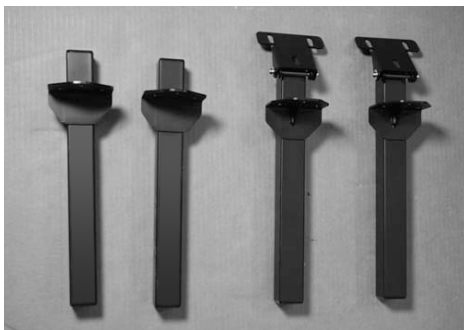
Establish the end position first, and work your way down the line in mirror symmetry. First one side, then the other.

If the position of the table needs to move more than an inch, get more people to



help support the other sections of the table.

Use a level on top, the leg levelers on the bottom, and hold the joints together as the joining plates are snugged in.



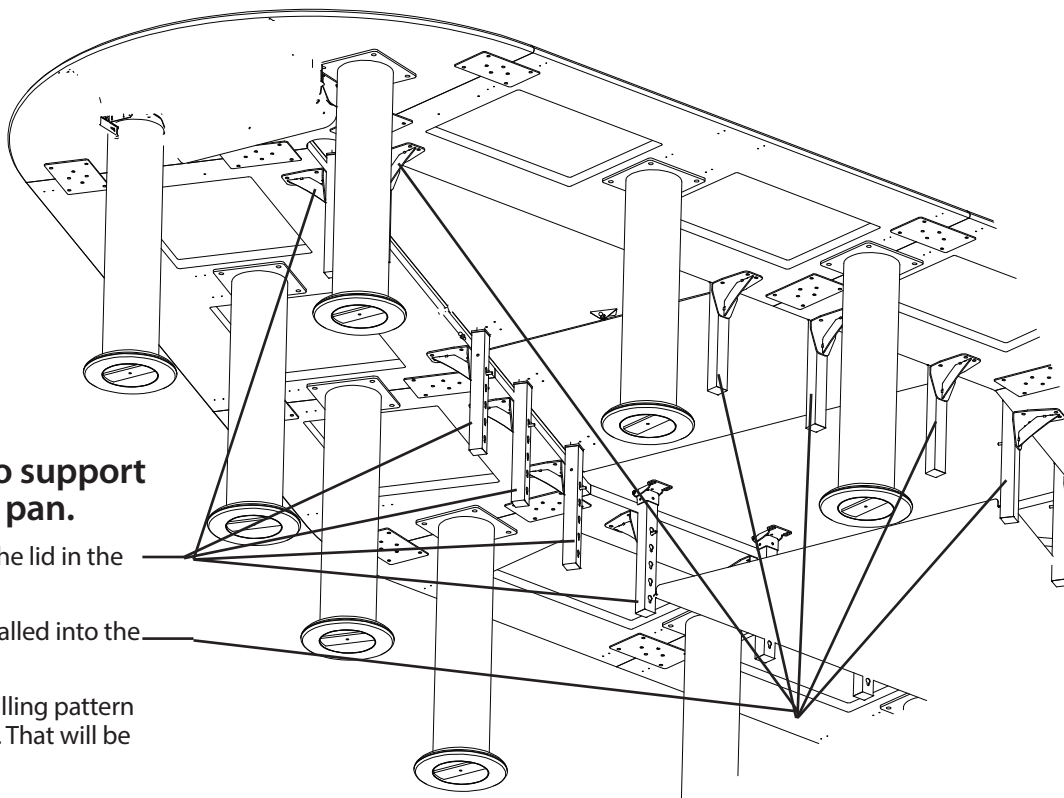
Install the stanson brackets to support the lid and wire management pan.

Brackets 30154 have post tops to support the lid in the closed position.

Brackets 30155 have hinged tops to be installed into the lid.

To double check this, note the pilot hole drilling pattern in the lid that is ready to accept the hinges. That will be your guide in getting it right.

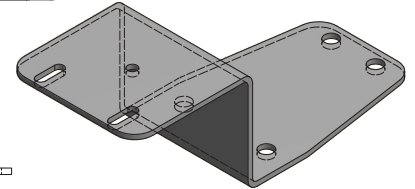
Install stanson brackets with supplied fasteners.



Install PIA-6137C-XXX fixed top section using Z Brackets

Z Brackets are used because they do not need to support the wire management pan. Match up the pilot hole patterns and install the brackets to the table top using #12 pan head wood screws.

Place the fixed lid top section on the installed Z Brackets and install with #12 pan head wood screws.



**Mount PIA-7247C-XXX
triangular top lid to
its hinges**

Use the provided wood screws to install the lid to the stanson bracket hinges.

Install Ball Stud Bracket to Post Stansion with 3 Self-Tapping Metal Screws

Position the bracket, drill 3 holes for installing the metal screws,



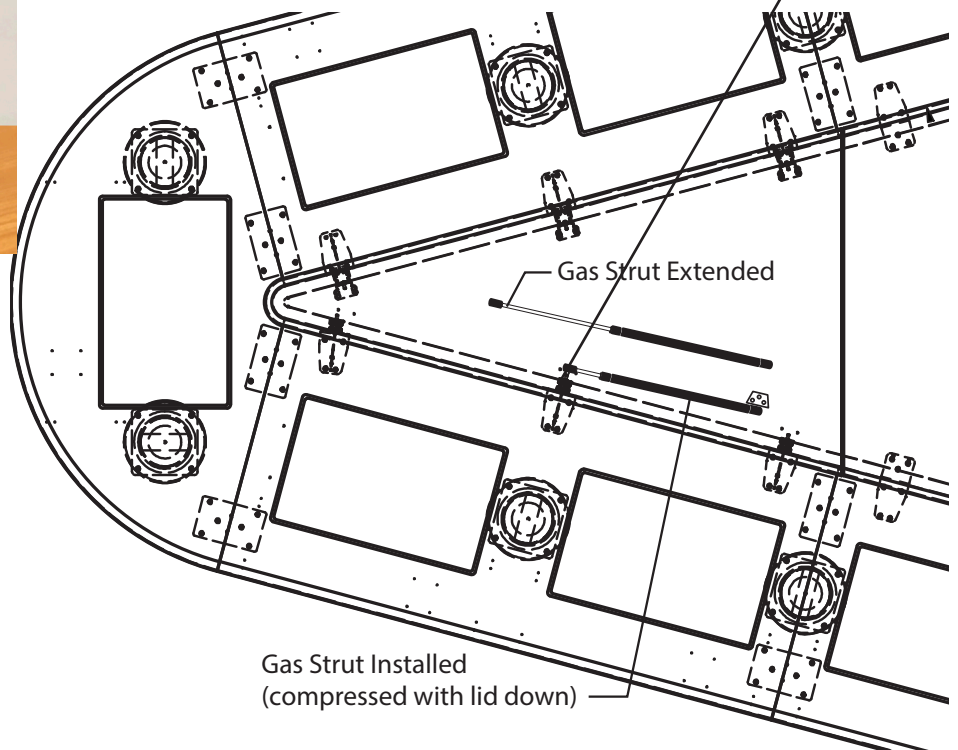
Install the Gas Spring Strut

Press the silver shaft end of the gas spring strut onto the ball stud on the stanson.

Raise the lid and prop it open with a seat cushion so the lid is raised about 18 inches (457mm). Position the ball stud bracket for making pilot holes.

Drill 1/8" pilot holes 1/2" deep for the ball stud bracket and install with #12 pan head wood screws.

Press the gas strut onto the ball stud and test the operation.



Another view of the strut being installed

The bracket is shown pressed onto the strut. This is also a good method for determining the location to drill pilot holes. The bracket may be positioned to the back of the strut when opened for better appearance. This would be a mirror image to the position shown in this photo.



Install the wire management pan

Select the desired depth of the wire management pan. Insert dual headed pegs into the keyholes at the height desired on all stansions.

Install flipIT® Monitor Mounts or Laptop Safes per custom order

Use separate instructions for installing flipIT® products.



Hang the pan on the posts.

From the underside, maneuver the pan into position and let it suspend by gravity. Use cable ties to manage wires.

800 770 7042 | www.smartdesks.com

SMARTDESKS®

where design meets technologysm