

# SAFEDESK™

## ENCLAVE™ SNEEZE GUARD



### Protective Barrier Shields

Protect employees and customers with our high quality, professionally designed clear acrylic Sneeze Guard panels. Our see-through protective barriers have a smooth edged opening on the bottom for safe document and currency exchange and are available in a variety of widths and heights to shield your entire workspace.

Sneeze guards can be mounted with freestanding feet for a moveable solution or be permanently fixed to your countertop or worksurface. Easy to clean, SAFEDESK™ Sneeze Guards are an effective solution to help keep your work environment safe.

- Panels are available in several widths and heights for maximum coverage
- Cutout is 4" high and extends the full width of the panel less than 6" from each side
- All acrylic edges are sanded for a smooth finish
- ¼" thick Acrylic is easy to clean
- Removable and permanent mounting options available
- Made in the USA
- Customization available – special materials, sizes, shapes and mounting options



### Mounting Requirements

The number of mount pieces included with each sneeze guard depends on sneeze guard width. Sneeze guards up to 54" have one document pass-through. Sneeze guards 60" to 72" have two document pass-throughs. Sneeze guards that are 90" have one document pass-through. Please contact SMARTdesks® with any required customization to sneeze guards.

#### Edge clamps

- Two edge clamps (knob or lever) are included with each sneeze guard up to 54".
- Three edge clamps (knob or lever) are included with each sneeze guard 60" to 72".
- Four edge clamps (knob or lever) are included with each 90" sneeze guard.

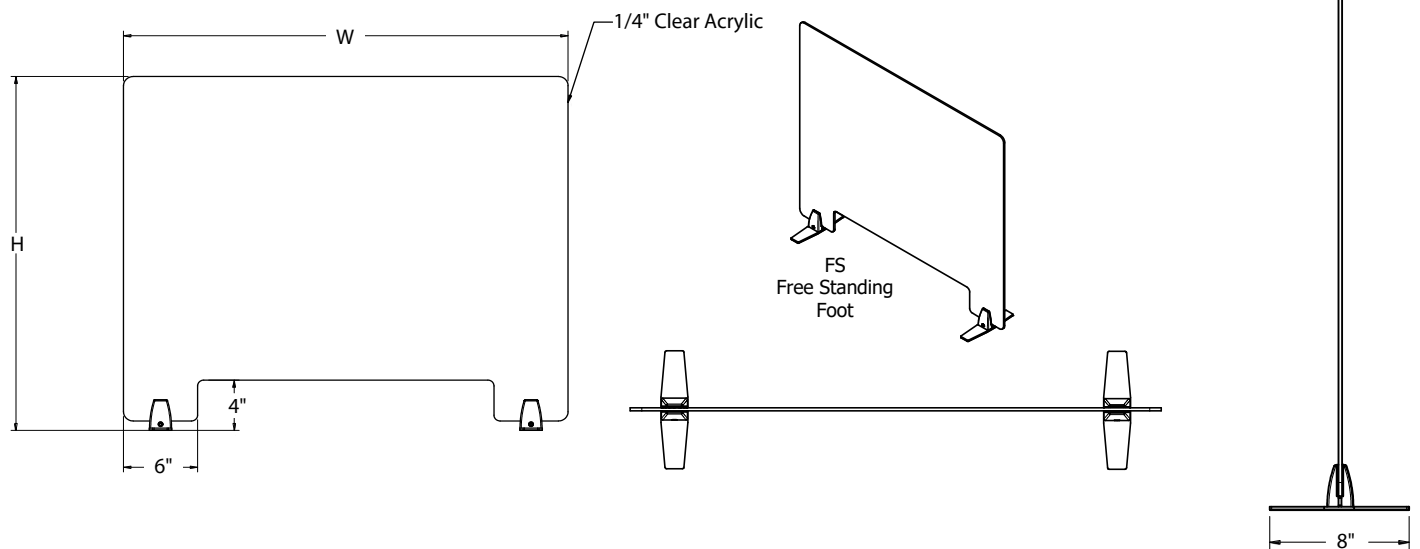
#### Free Standing mounts

- Two Free Standing mounts are included with each sneeze guard up to 54".
- Three Free Standing mounts are included with each sneeze guard 60" to 72".
- Four Free Standing mounts are included with each 90" sneeze guard.

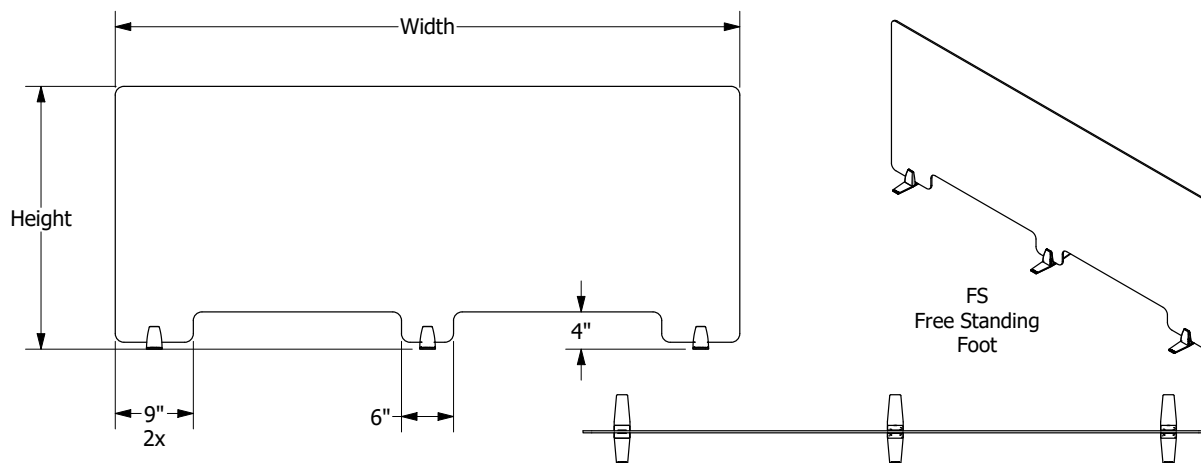
#### Top mounts

- Two top mounts are included with each sneeze guard up to 54".
- Three top mounts are included with each sneeze guard 60" to 72".
- Four top mounts are included with each 90" sneeze guard.

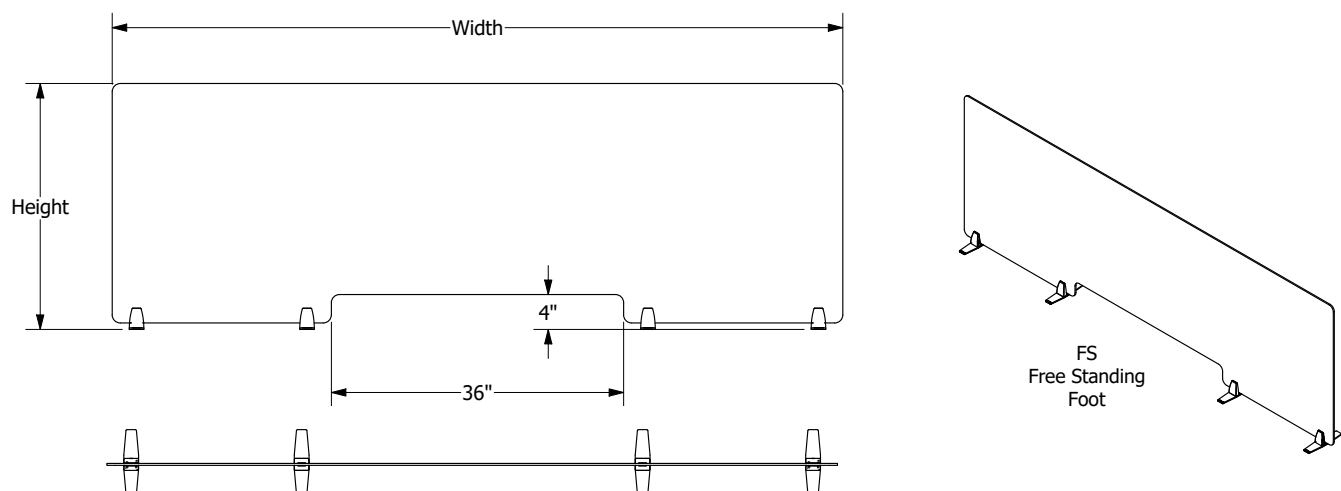
## SNEEZE GUARD LAYOUT FOR PANEL WIDTHS OF 23"-54"



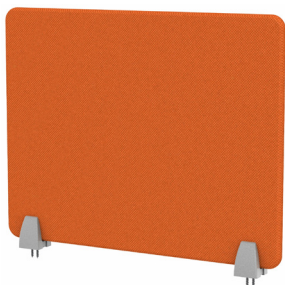
## SNEEZE GUARD LAYOUT FOR PANEL WIDTHS OF 60"-72"



## SNEEZE GUARD LAYOUT FOR PANELWIDTH OF 90"



# SAFEDESK™ MOUNTING OPTIONS



## Top Mount (TM)

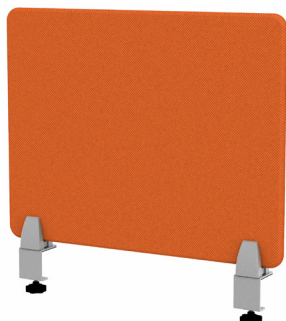
- Use for permanent mounting
- Install anywhere on the desk
- Work on all thickness tops
- Clamp position on panel is adjustable
- Kits include 2, 3, or 4 Top Mounts depending on the width of the sneeze guard



Top Mount (STM)



Top Mount (BTM)

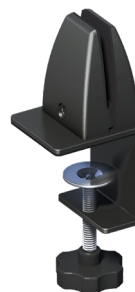


## Edge Clamp - Knob (CEK)

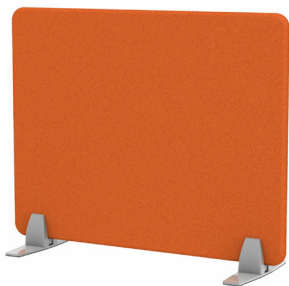
- Fast & easy installation and relocation
- Mount along the edge of work surface
- Clamp fits 3/4" to 2" thick tops
- No screwing or drilling into work surface required
- Clamp position on panel is adjustable
- Kits include 2, 3, or 4 Clamps depending on the width of the sneeze guard



Edge Clamp - Knob (SCEK)



Edge Clamp - Knob (BCEK)



## Free Standing Foot (FS)

- Fast & easy installation and relocation
- Stands freely on top of work surface
- Clamp position on panel is adjustable
- No screwing or drilling into work surface required
- Kits include 2, 3, or 4 Free Standing Feet depending on the width of the sneeze guard



Free Standing (SFS)

### Disclaimer:

SMARTdesks® products sold on [www.smartdesks.com](http://www.smartdesks.com), including but not limited to privacy panels, desk dividers, safety shields, and sneeze guards sold under the SAFEDESK™ line, are not designed or intended to mitigate, prevent, treat, diagnose or cure any disease or health condition. SMARTdesks® does not make any medical or health claims with regard to these products.

800 770 7042 | [www.smartdesks.com](http://www.smartdesks.com)

**SMARTDESKS®**

where design meets technology<sup>sm</sup>