



These instructions also apply to:

- Motif Computer Conference Tables
- flipIT Lift Desks
- iLid DUO Desks
- Work from Home Desks

Universal Assembly Instructions

In practice, all SMARTdesks assemble using the same approach. They differ in whether they are a simple desktop, a flipIT® desktop, or flat panel FP Series desktop with monitor port and shelf. The Newpath laptop desks have contoured panels and tops, but the approach to assembly is the same, using Conformat Screws for assembling the cabinets and Lamello Cabineo

surface connectors for attaching the top to the base cabinets.

These instructions were photo illustrated with the FI Series flipIT® models. It will show the keyboard/mouse trays being installed at an early stage when gravity is your friend. If your specific desk does not include a keyboard/mouse tray, please

disregard. This would be true for desks with the flipIT Laptop Safe®.

You will note that the main difference between the single and the double is the additional CPU bay. The approach to assembly is the same for both models. These instructions will emphasize the double.



Newpath and LT Series Desks have no keyboard trays or CPU cabinets. flipIT Laptop Safe® instructions apply after desk assembly.



The DT Series desktop may include separate instructions for accessories, such as LCD arms from the LCD arm manufacturer.

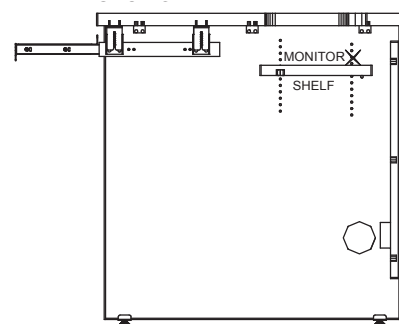
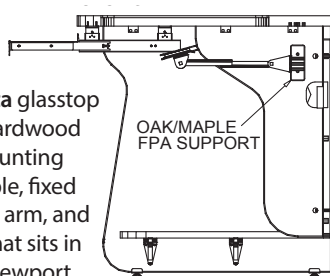


The FP Series Desk has an adjustable depth monitor shelf that installs with pins after desk assembly.



The LT Series laptop desk

The MiraVista glasstop desk has a hardwood brace for mounting the adjustable, fixed position LCD arm, and plate glass that sits in the routed viewport.



Tools Required

- Screw gun
- 4mm hexagon bit for Confirmats (provided)
- 4mm ball head hexagon bit for Lamello Cabineo surface connectors (provided)

Pre-Assembly:

Use a furniture blanket to prepare a safe workspace for finished surfaces.

Install Lamello Cabineo Surface Connectors

The milled locations are easy to identify. Simply tap the surface connectors into these locations with a hammer. Avoid full power pounding!!

The tip of the screw ships “proud” which enables easy assembly.

The diagram shows how the surface connector works. The 4mm ball end hexagon bit is used with a screw gun to make the surface connection. The ball end is used because the access to the screw head is at an angle.

Note: The 4mm ball head hexagon bit for Lamello Cabineo surface connectors can be turned around to make a straight 4mm hexagon bit for Confirmats. This is recommended to extend the tool life of the ball end.



Install Levelers | Floor Glides | Locking Casters

Place black metal trim parts in position over the hole and install the threaded insert using the 6mm hex key (provided).

DO NOT USE A SCREW GUN.

Install the threaded floor glides or locking casters into the inserts.



Assembly:

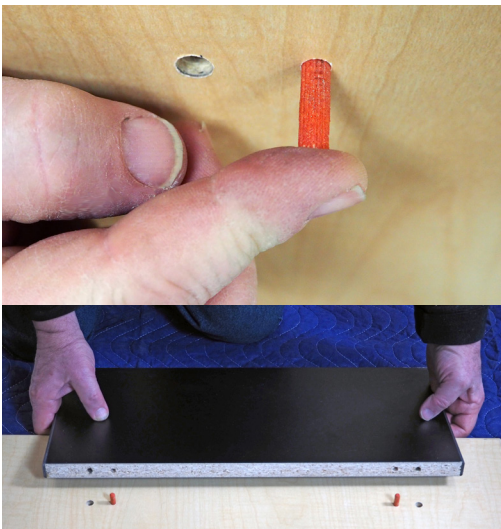
On the floor, use a furniture blanket to prepare a safe workspace for finished surfaces. If using carpet, vacuum to make sure nothing sharp, like a paper clip, thumb tack, or stray wood screw is present to ruin the furniture surface.

Install keyboard/mouse tray, if the model includes it.

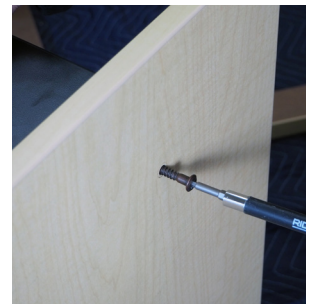
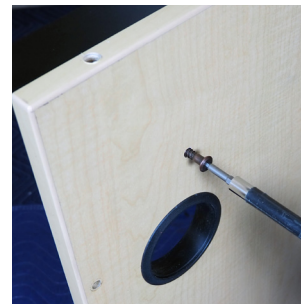
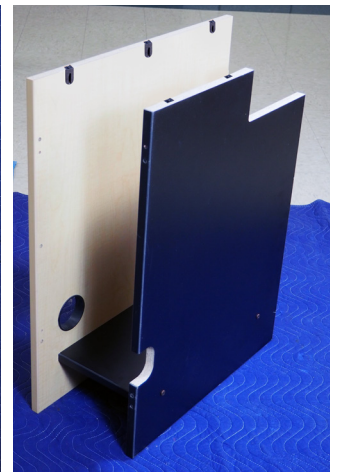
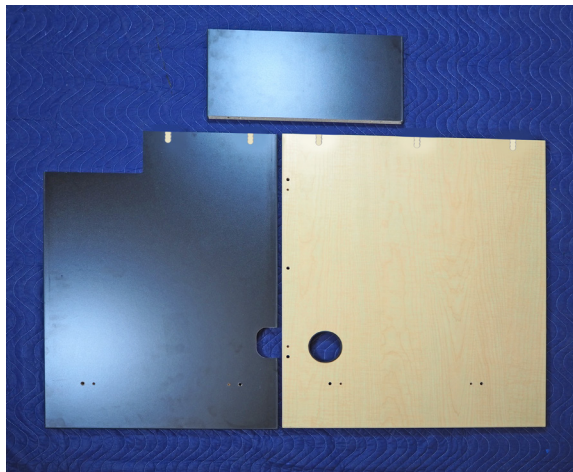
Eight Phillips head wood screws will be found for each keyboard/mouse tray. It is best to install this before installing cabinets, as depicted, because access to the screw locations is limited.

Assemble CPU Cabinets

The end CPU cabinet will be black on the inside and a laminate color chosen by the client on the outside. In this manual, the inside laminate was chosen to be fusion maple for clarity in showing the pilot hole locations. Expect the inside color to be black.



Colored dowels are used to help locate the shelf for assembly. Press the dowels into the locations in the panel, then begin assembly.

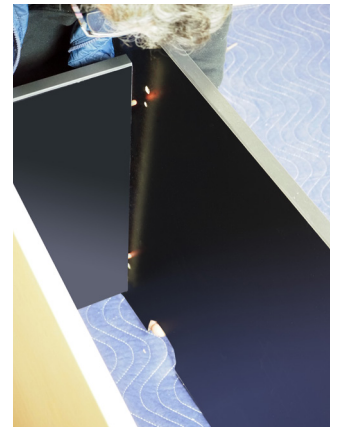
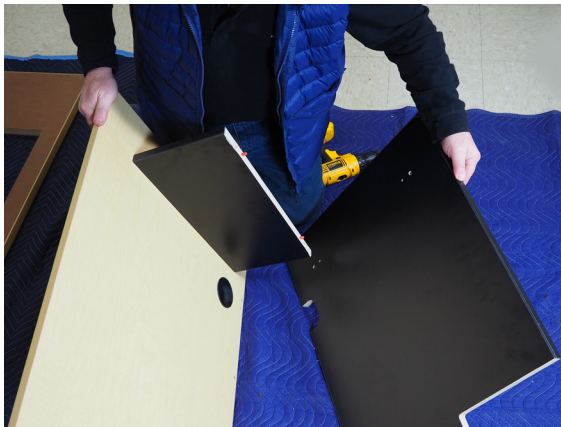


Press the shelf onto the end panel with the dowel pin locators, then use the 4mm hex tool in a screw gun to mount the shelf using Bronze Confirmat Screw Connectors.

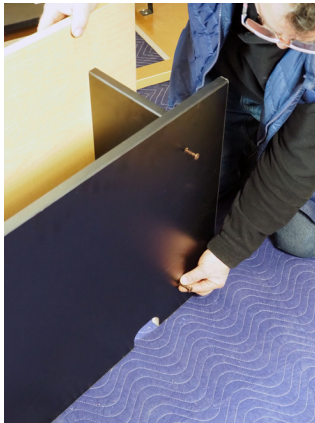


CPU Cabinet Assembly, continued.

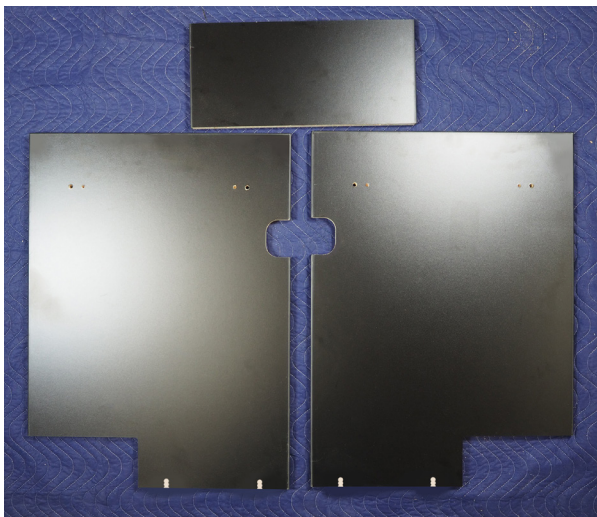
With the shelf now attached to the end panel with Confirmats, match up the dowel locations to the all black cabinet panel.



Complete the end panel CPU cabinet by securing with two Confirmats using the 4mm hex drive and screw gun.

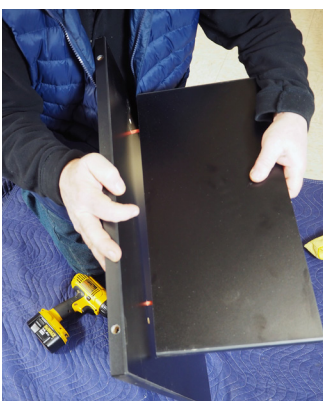


The double desk has a second CPU cabinet. The photo shows the parts and the completed assembly.



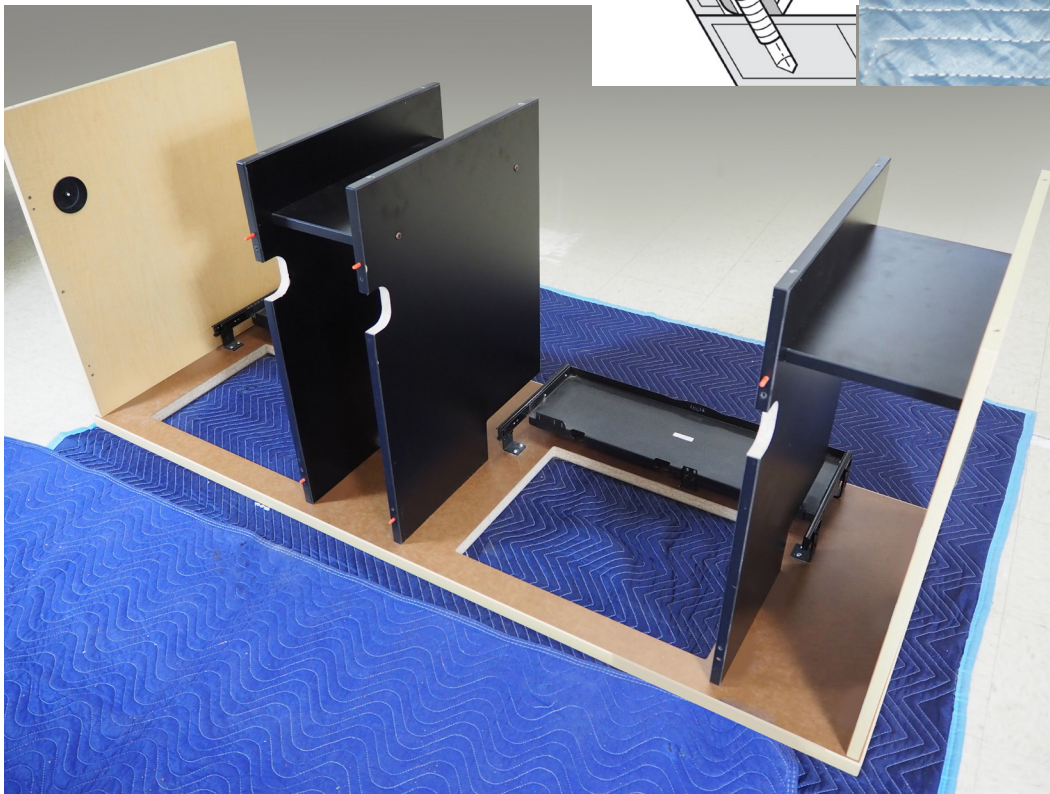
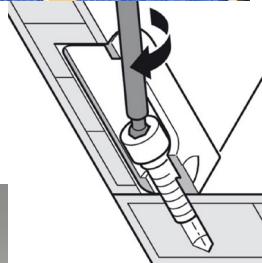
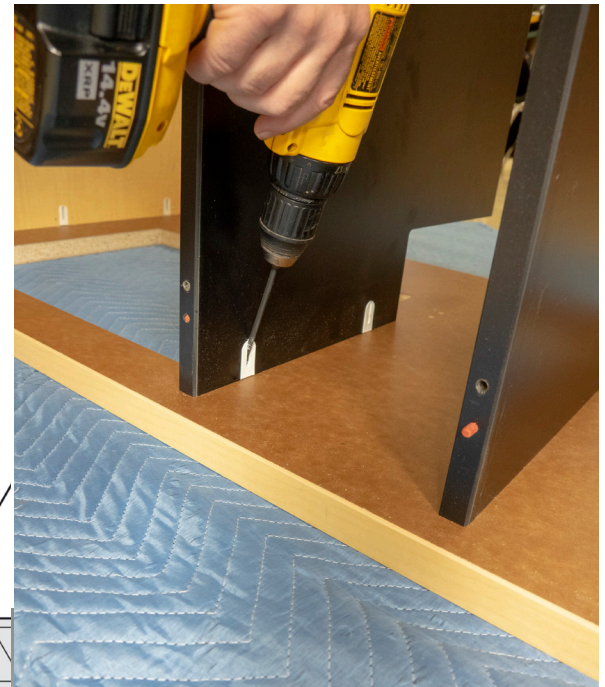
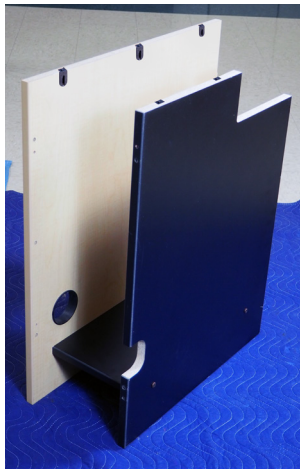
It goes together exactly like the end panel:

- Locate the shelf with dowels
- Install with Confirmat screws
- Locate the second side to the installed shelf with dowels
- Install with Confirmat screws.



Attach base cabinet assemblies and panels to the top with Lamello Cabineo Surface Connectors

- The screws of the surface connectors are outset to facilitate locating them in the pilot holes.
- Note the locations of the wire pass-throughs and 80mm wire grommet: they should be at the back side of the top, opposite of the user side.
- Place dowels to help locate the modesty panel (the next step).
- Start with the end panel with the CPU cabinet assembly.
- If you are assembling a double, set the middle CPU cabinet assembly.
- If you are assembling a single or a double, set the end panel next.
- Use the ball end 4mm hex driver in a screw gun to drive the surface connectors into the top.
- The point of using a ball end hex driver is to let you drive a square fitting at an angle. Use this design feature to your advantage.



Note that the keyboards trays have been mounted prior to mounting the base panels.

If you skipped this step, please help yourself out and install them sooner, rather than later.

If you are assembling a desk for laptops, keyboard trays will not be included.

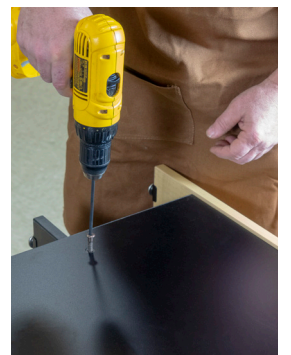
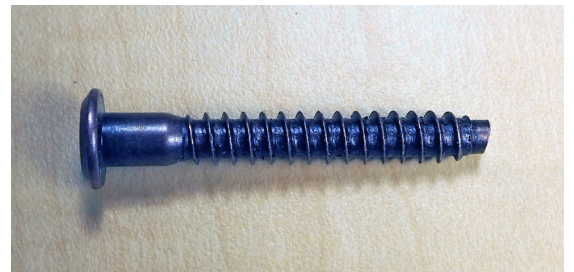
Turn desk for placement of the modesty panel



- Check to see that the pilot hole patterns of the modesty panel line up with the ones in the base panels.
- Let gravity do the work. Move the modesty panel around so the dowels locate the base cabinet(s) and panel.



- Use the straight end of the 4mm hex drive in a screw gun to install three Confirmats to secure the side panels to the modesty panel.
- Use Confirmats through the modesty panel to secure it to the CPU base cabinets.





And that's it!

Please refer to flipIT® instructions if you are completing a flipIT® FI Series Desk.



The DT Series desktop may include separate instructions for accessories, such as LCD arms from the LCD arm manufacturer.

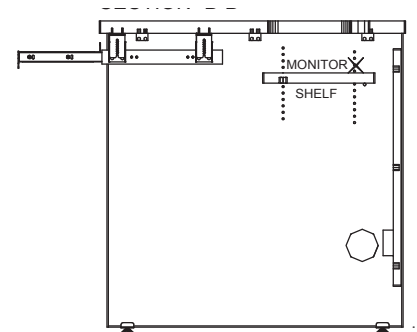
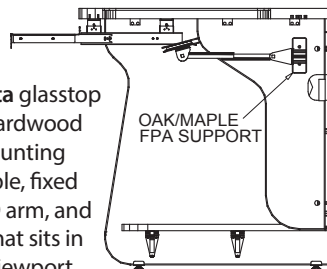


The FP Series Desk has an adjustable depth monitor shelf that installs with pins after desk assembly.



Newpath and LT Series Desks have no keyboard trays or CPU cabinets. flipIT Laptop Safe® instructions apply after desk assembly.

The MiraVista glasstop desk has a hardwood brace for mounting the adjustable, fixed position LCD arm, and plate glass that sits in the routed viewport.



UNIVERSAL DESK ASSEMBLY INSTRUCTIONS

SMARTDESKS®