

Tao | Rio

dynamic balance active learning furniture system

two halves
that together complete wholeness

the starting point for change

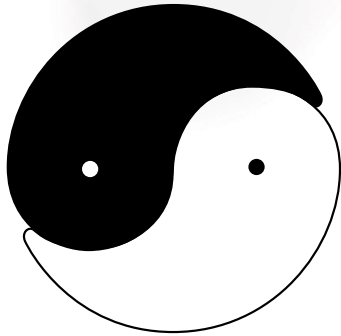
SMARTDESKS®

The Tao Rio Table System is really about what happens around it.



Symbolic of a flow to find a balance

When something is whole, it is unchanging and complete. Splitting something whole into two halves —yin/yang— is a graphic interpretation of that split. Representing the dynamic equilibrium of wholeness, yin/yang is not a static state.

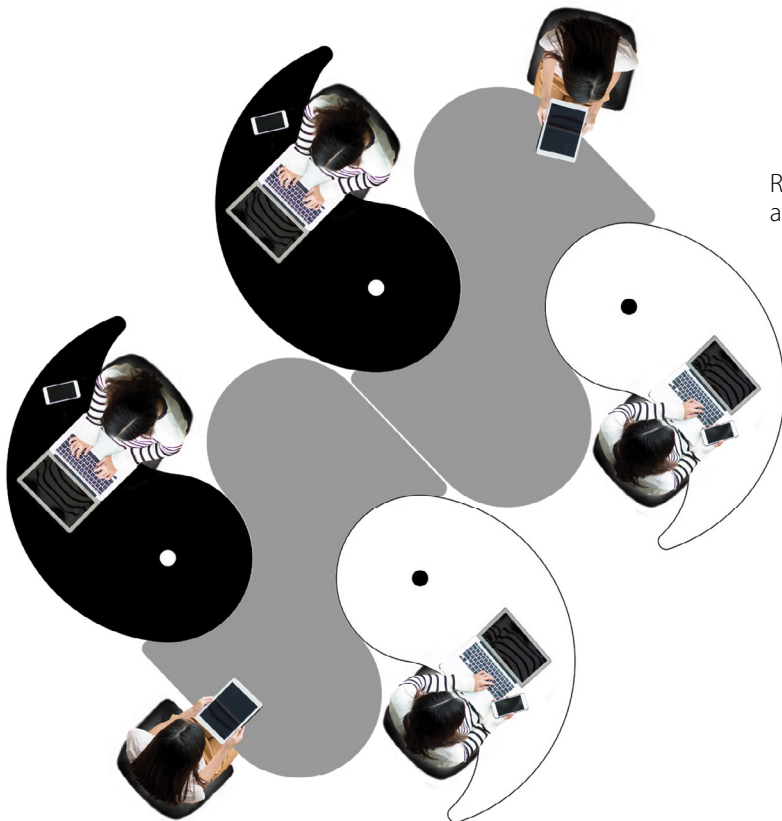


The iconic figure symbolizes both halves chasing after each other as they seek a balance with each other, in the moment.



Rio (River) Tables are linear sections

where 2 people can dynamically share a space.



Tao and Rio tables, used together...

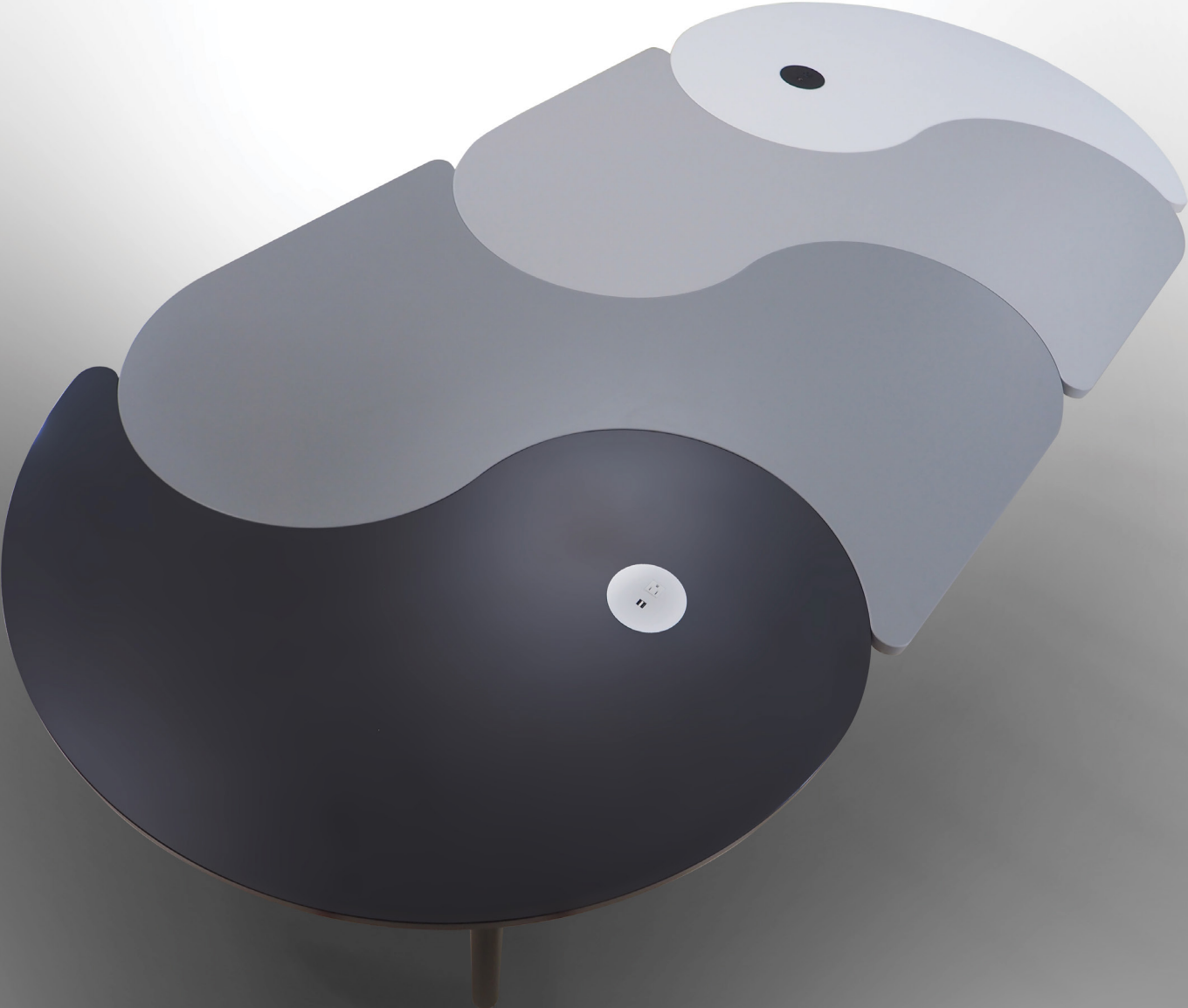
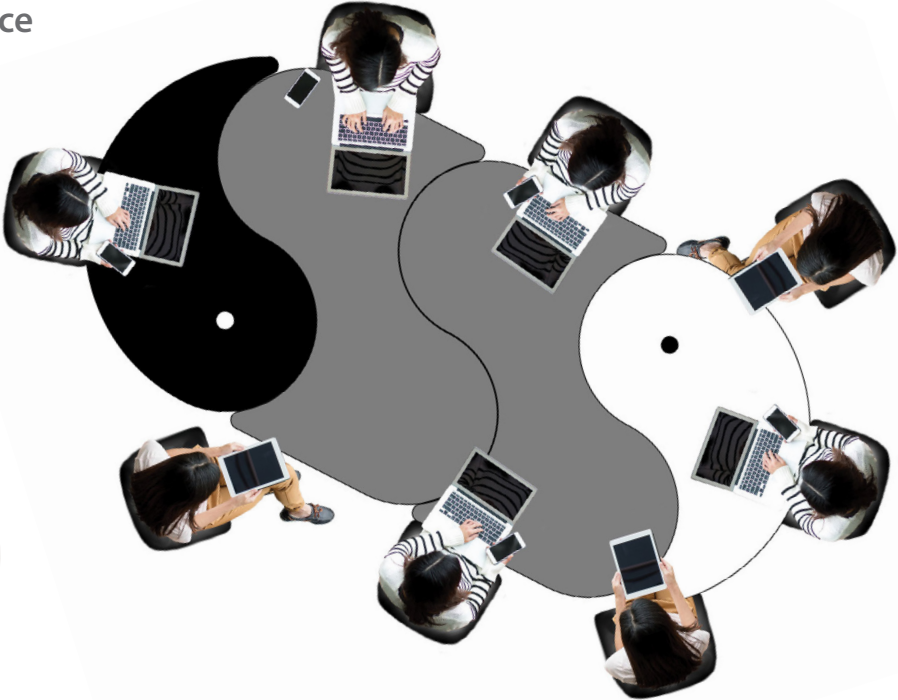
expand the area for group communication and finding balance.

The nature of the Tao expands out. This process of expansion defines a pattern, splitting apart into finer and finer patterns.

Formal balance | Formal conference

The Tao Circle of yin and yang nest together with two Rio tables, around which six to eight people may be seated.

Convenient power ports keep participants fully charged.



Tao Table Set - yin/yang Set of 2

- One black table with black legs and white cover
- One white table with white legs and black cover.
- Each table consists of a curved teardrop top; round Cove unit has 1 power receptacle and 2 USB charging inserts (2.1 Amp) with a 108" power cord
- 3 table connectors attach tables in a variety of configurations (designed to work with Rio tables)
- Three 2" diameter, 14 gauge steel post legs
- Casters (if specified)
- Top finished in high pressure laminate or melamine with semi-rigid PVC edge trim
- Legs are powder-coated
- each table is 60" w x 30" d x 29" h
- This is a set of two.



Rio Tables

- Each table has a double curve top
- 6 table connectors to attach tables in a variety of configurations (designed to work with Tao tables)
- Four 2" diameter, 14 gauge steel post legs
- Anti-sag bar
- Casters (if specified)
- Top finished in high-pressure laminate or melamine with semi-rigid PVC edge trim.
- Legs are powder-coated
- 60" w x 64" d x 29" h

