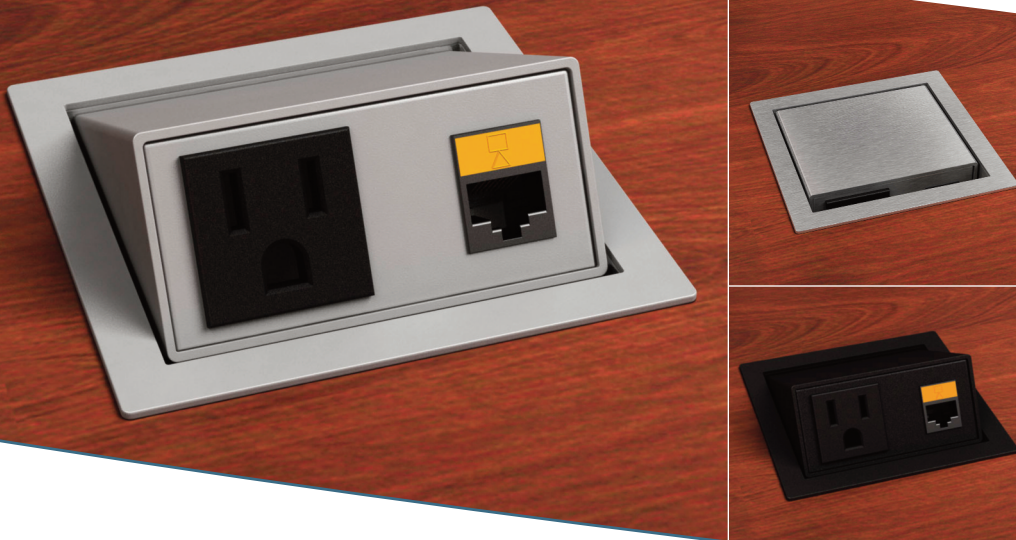


SPECIFICATION SHEET AND ORDERING INFORMATION



Specifications

- Shown with RJ-45, other configurations available (see below).
- Available in Black and Silver powder coat or brushed stainless steel finishes.
- 72" patch cord and power cord come standard.
- Latches in open position.
- Recommended table cutout 3.40" x 3.40"
- Fits table thickness between .75" to 1.88"
- UL Listed.

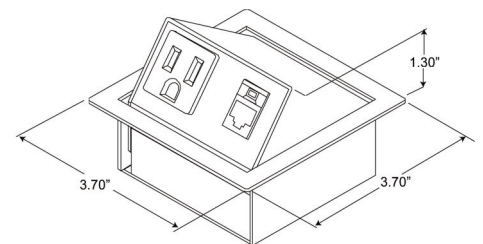
TOP NOTCH2 FLIP UP UNIT

The Top Notch2 family of tabletop products is the ideal choice for single user applications. The lid flips up to provide access to power and data. When closed the Top Notch2 discretely becomes part of the work surface. A variety of data options can be incorporated to satisfy your telecommunications requirements.

Ordering information

Part number	Product Configuration
Power	
TOP NOTCH2 P SS	Flip up unit, 2 power, 108" power cord and brushed stainless steel finish.
TOP NOTCH2 P SP	Flip up unit, 2 power, 108" power cord and silver pearl finish.
TOP NOTCH2 P BL	Flip up unit, 2 power, 108" power cord and black textured finish.
Power and Data	
TOP NOTCH2 B BL	Flip up unit, 1 power, 1 RJ-45 (cat 6) connector, 72" power cord, 72" patchcord and black textured finish.
TOP NOTCH2 B SS	Flip up unit, 1 power, 1 RJ-45 (cat 6) connector, 72" power cord, 72" patchcord and brushed stainless steel finish.
TOP NOTCH2 B SP	Flip up unit, 1 power, 1 RJ-45 (cat 6) connector, 72" power cord, 72" patchcord and silver pearl finish.
Power and USB	
TOP NOTCH2 U BL	Flip up unit, 1 power, 1 USB Universal connector, 72" power cord, 72" patchcord and black textured finish.
TOP NOTCH2 U SS	Flip up unit, 1 power, 1 USB Universal connector, 72" power cord, 72" patchcord and brushed stainless steel finish.
TOP NOTCH2 U SP	Flip up unit, 1 power, 1 USB Universal connector, 72" power cord, 72" patchcord and silver pearl finish.
Accessories	
POWERED-USB	Powered USB transformer to bring power from any standard outlet to the Top Notch2 USB connector.

Product Dimensions



TOP NOTCH2 POWER BASE SHOWN
3.70" x 3.70" x 1.30"