

TriO Table Assembly



SMARTDESKS

where design meets technology™

800 770 7042

www.smartdesks.com

Step 1:

Blanket an assembly area.

This is to protect top surfaces from becoming scratched during the process.

Little metal parts or wood screws should not be allowed to foul this area. It is important to keep the blanket free of anything abrasive.



Next:

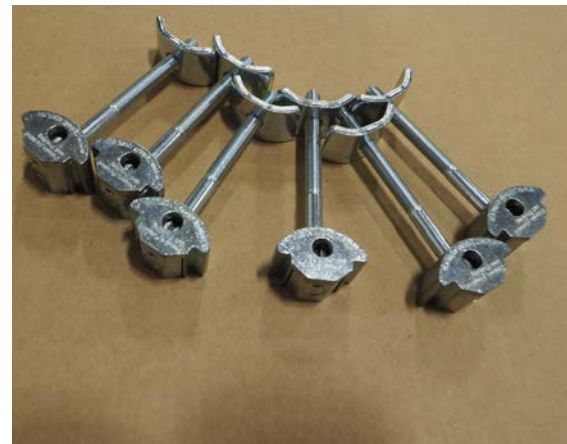
Locate these parts for the first step in assembly:

3 table top sections

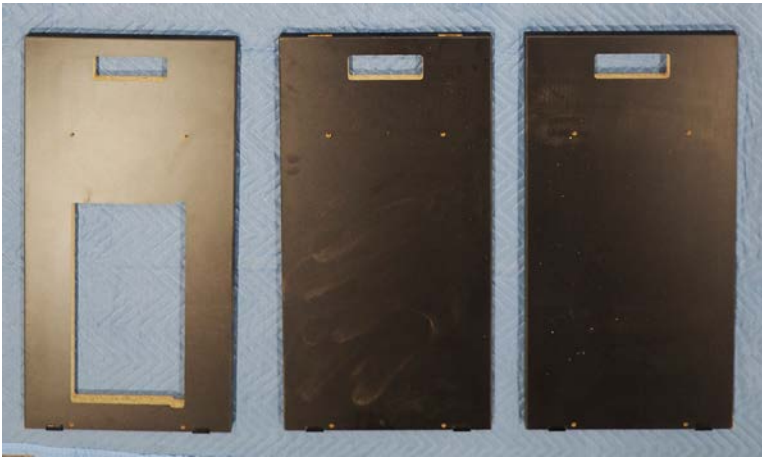
6 splines

6 Zip bolts

5mm hex key



Parts and Hardware



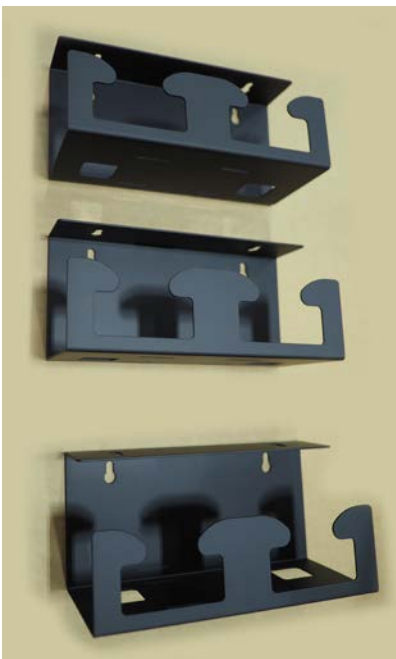
3 (three) Center Column Panels with cutouts for RM1 Door and Cove power / USB charger components.



Triangular lid with milled recesses for hinges to be flush mounted.



Column supports, top and bottom, with cams for pins.



3 (three) WireWonder wire managers



RM1 ventilated hatch door



3 (three) TriO table top sections, finished with custom laminate and edge trim.



3 (three) 2" column legs with levelers, 4" mounting plate.



6 (six) L brackets, which mount to center column.

Parts and Hardware



Door lock cartridge for RM1 Hatch Door.



Zip bolts used to unitize the TriO top sections. Sections are fit together with spline biscuits with Zip bolts loose, tightened with 5mm hex wrench after final positioning.



Wood screws, #10 x 3/4 pan head #2 Phillips drive, used for attaching brackets to column, top to column.

Wood screws, #12 x 1" pan head #2 Phillips Drive, used to install legs to table top.

Black wood screws are used for installing WireWonder.



Brass hinges and wood screws for installing triangular lid to center column.



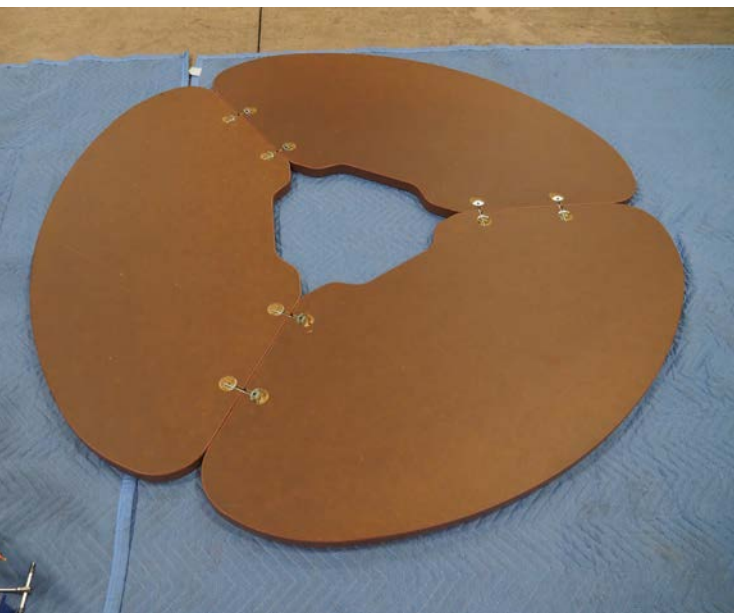
Levelers to be installed into center column



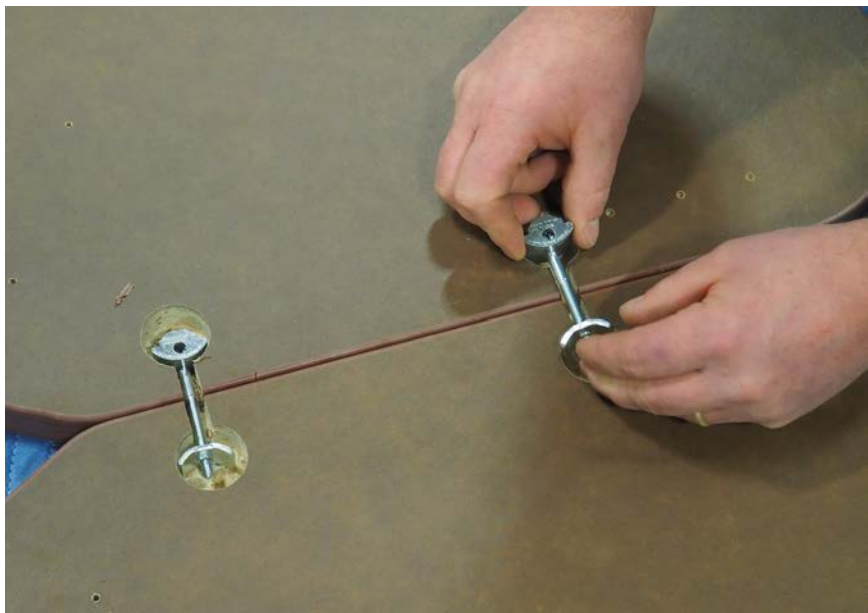
Spline biscuits to be installed before unitizing the tops with Zip bolts.



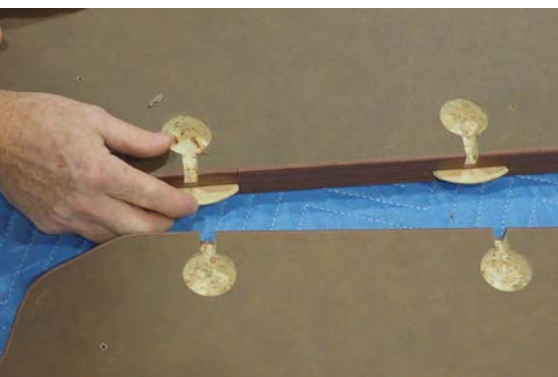
Pins to be used for assembling the center column using installed cams.



Blanket an assembly area. Place the 3 table top sections face down.



Place Zip Bolts into the milled channels and set loosely (pre-snug)

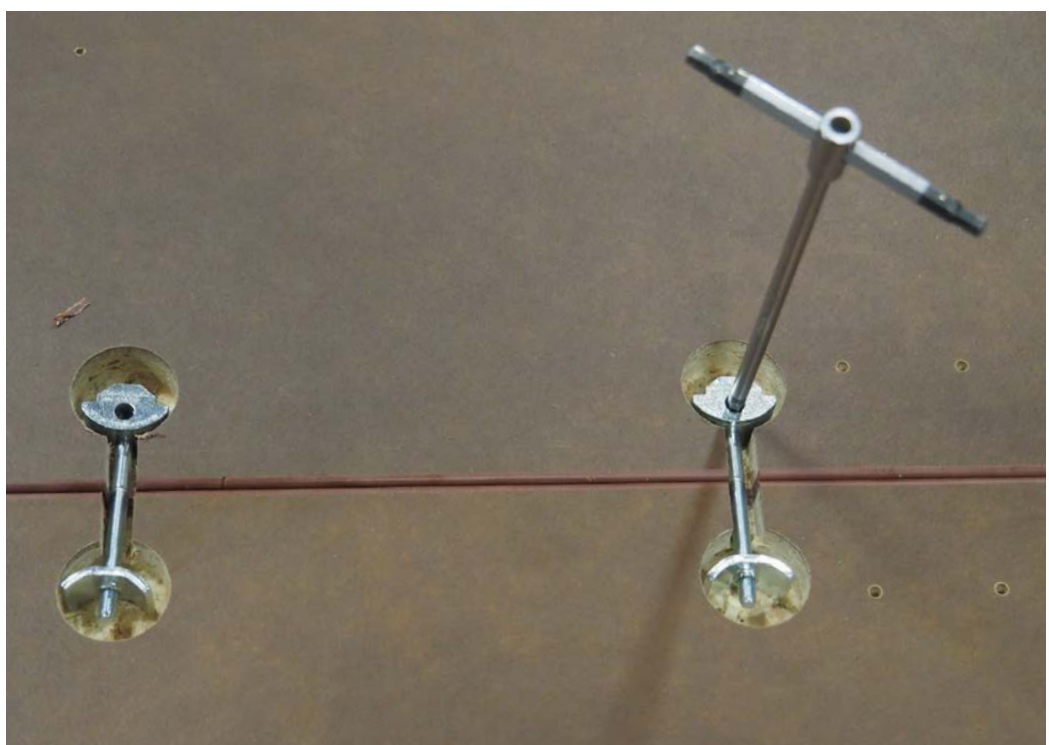


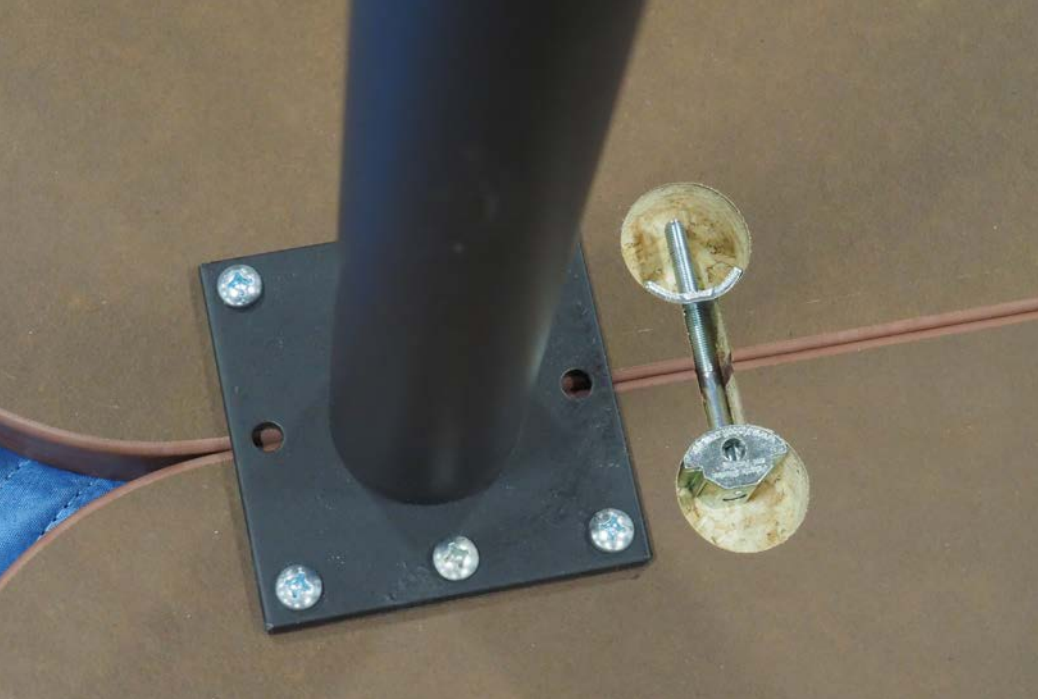
While the assembly is still loose, get help pushing the table sections so they fit together perfectly.

When the table form is completely aligned, tighten the Zip Bolts completely with a 5mm hex wrench.



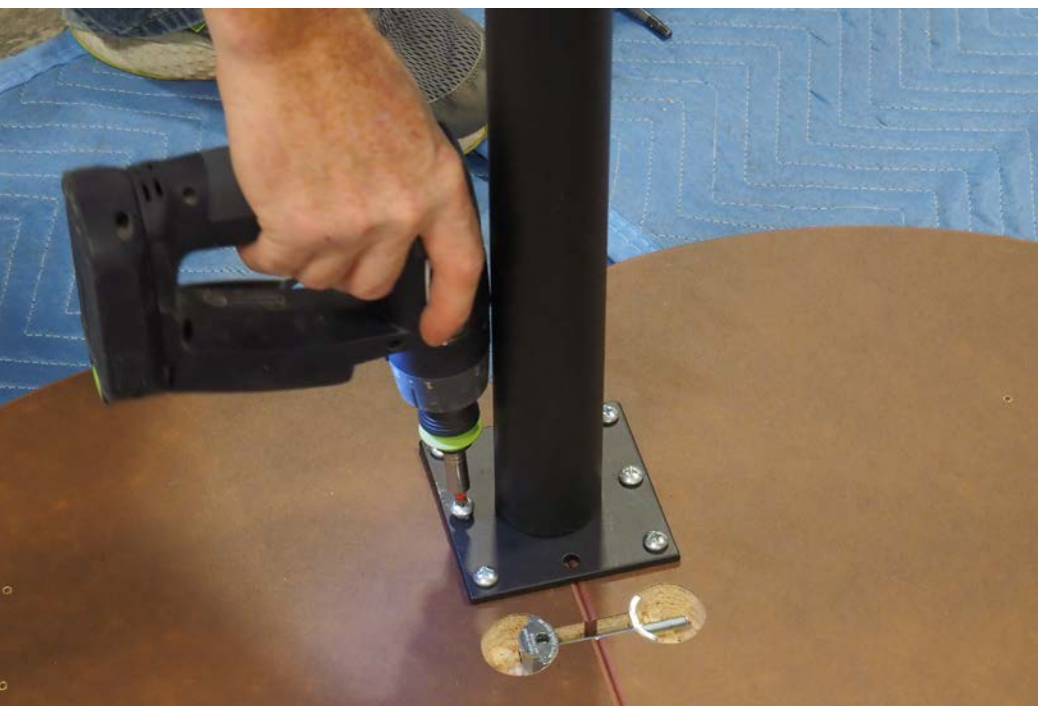
Place splines in the slotted edges and push top sections together.





Place legs so they perfectly bisect the seam. Pilot holes are pre-drilled.

Install with #12 x 1" pan head wood screws. 3 legs.



Adjust the leg glides so they extend uniformly beyond the tube by the thickness of the glide foot.

This will give compensation for the levelers in the center column. Fine-tuning and leveling will take place before we're done, but this will be roughly good enough for assembly for the next step.



The end of this step is a solidly unitized top with 3 legs attached and table leg levelers extended for rough assembly to the center column.

The next step is to assemble the center column. The unitized top will slip over the center column for installation.

It is a good idea to consider the final location for the TriO installation so the completed center column can be placed there.

Once the table top and center column are assembled, the unit is heavier to move.



These pins will be inserted from the outside of the panels to the cam lock installed in the triangular column supports.



These are the column panels, with cutouts for Cove power units at the top and one has a cutout for the RM1 ventilated hatch door. Pin installation locations are drilled.



The top column support has a smaller wire pass through; the base support has a larger pass-through.



Starting with the base support, install 2 pins. the arrows on the cam locks must be pointing to the pin opening to permit insertion.



Repeat the procedure for a second column panel.



Install the last panel with pins and cams, starting with the base.



Use a #2 Phillips driver to rotate the cam lock. A powered screw gun is not necessary for this. Hand tightening is sufficient.



Put unit on its base and install the top support.



Secure the top support with pins and cams through the large hatch cutout.



Place the assembly on its side and install the top column support with pins and cams on the second side.



Install 6 leveler feet into the threaded locations. Screw in to desired height for wire clearance, as needed, or all the way.



The triangular center column ships pre-assembled for this installation.

Install 6 brackets to the center column in pre-drilled pilot holes using #12x3/4" pan head screws



Install WireWonder wire manager into center column on 3 sides.
Install the pan head screws part way.



Use the keyholes in the WireWonder to capture the screw heads. Then tighten the screws to complete the installation.



The RM1 Hatch Door simply gets placed in position.



Install the door frame with black wood screws.



The finished bracket installation showing 6 brackets installed.



The lock cartridge is installed as a kit so it locks into the jamb.



Before moving the table, see that the table leg levelers are adjusted to extend beyond the leg tube by about the leveler thickness. If the center column levelers have been set extended, try to match that setting.

Now, make your move.

2 people carefully pick up the finished table assembly...

lifting it on edge...

and in one smooth movement, set the assembly on its feet.

The center column is nearby, ideally near its finished, installed position.

2 people lift the table and place it over the center column.

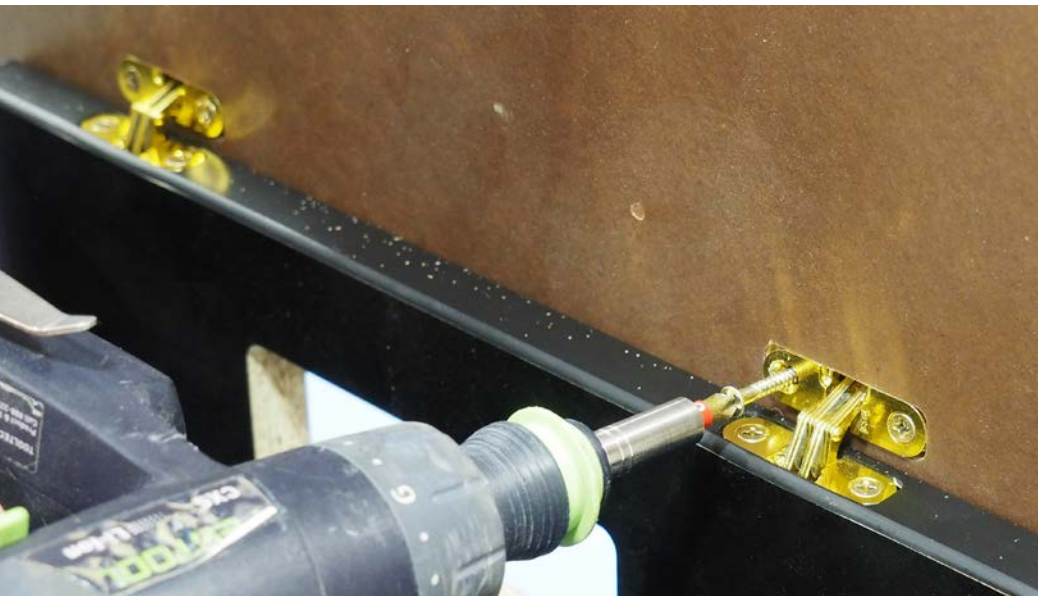
Check the relationship of the table top to the brackets. Adjust the leg levelers as needed so the brackets support the top and the legs do their work.

Attach the top to the brackets with #10x 3/4 pan head wood screws.





Lid hinges and screws are packaged together. These parts are brass finish.



Place the hinge into the pocket milled into the edge of the center column top.
Install with brass wood screws provided.
With help, install hinges to triangular lid.
Use the milled locations for flush mounted hinges.

3 Cove 1P1U power and charging grommets are installed according to instructions provided with the units.

The finished installation:
TriO is complete





800 770 7042
www.smartdesks.com